

Integral Operators

Functional Analysis Examples c-5

Leif Mejlbro

Download free books at

bookboon.com

Leif Mejlbro

Integral Operators

Integral Operators

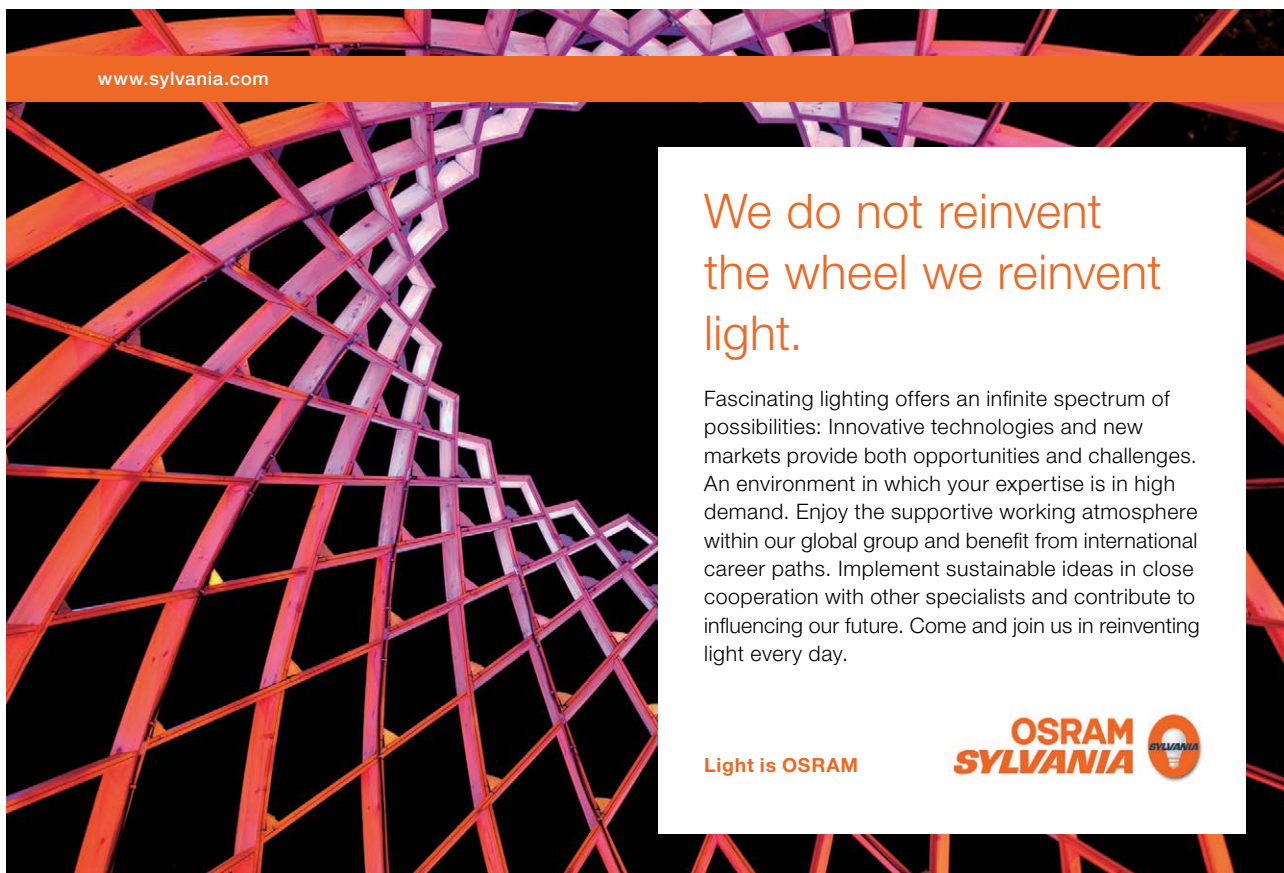
© 2009 Leif Mejlbro & Ventus Publishing ApS

ISBN 978-87-7681-529-5

Disclaimer: The texts of the advertisements are the sole responsibility of Ventus Publishing, no endorsement of them by the author is either stated or implied.

Contents

1.	Hilbert-Smith operators	5
2.	Other types of integral operators	47
	Index	66




www.sylvania.com

**We do not reinvent
the wheel we reinvent
light.**

Fascinating lighting offers an infinite spectrum of possibilities: Innovative technologies and new markets provide both opportunities and challenges. An environment in which your expertise is in high demand. Enjoy the supportive working atmosphere within our global group and benefit from international career paths. Implement sustainable ideas in close cooperation with other specialists and contribute to influencing our future. Come and join us in reinventing light every day.

Light is OSRAM

**OSRAM
SYLVANIA** 

1 Hilbert-Schmidt operators

Example 1.1 Let (e_k) denote an orthonormal basis in a Hilbert space H , and assume that the operator T has the matrix representation (t_{jk}) with respect to the basis (e_k) . Show that

$$\sum_{j=1}^{\infty} \sum_{k=1}^{\infty} |t_{jk}|^2 < \infty$$

implies that T is compact.

Let (f_k) denote another orthonormal basis in H , and let

$$s_{jk} = (Tf_j, f_k)$$

so that (s_{jk}) is the matrix representation of T with respect to the basis (f_k) .

Show that

$$\sum_{j=1}^{\infty} \sum_{k=1}^{\infty} |t_{jk}|^2 = \sum_{j=1}^{\infty} \sum_{k=1}^{\infty} |s_{jk}|^2.$$

An operator satisfying

$$\sum_{j=1}^{\infty} \sum_{k=1}^{\infty} |t_{jk}|^2 < \infty$$

is called a general Hilbert-Schmidt operator.

Write $t_{jk} = (Te_j, e_j)$. It follows from VENTUS, HILBERT SPACES, ETC., EXAMPLE 2.7 that

$$Tx = T \left(\sum_{j=1}^{+\infty} x_j e_j \right) = \sum_{j=1}^{+\infty} \sum_{k=1}^{+\infty} x_j t_{jk} e_k.$$

Define the sequence (T_n) of operators by

$$T_n x = T_n \left(\sum_{j=1}^{+\infty} x_j e_j \right) = \sum_{j=1}^{+\infty} \sum_{k=1}^n x_j t_{jk} e_k.$$

The range of T_n is finite dimensional, so T_n is compact. Then we conclude from

$$\|(T - T_n)x\|^2 = \left\| \sum_{j=1}^{+\infty} \sum_{n=1}^{+\infty} x_j t_{jk} e_k \right\|^2 = \sum_{k=n+1}^{+\infty} \left| \sum_{j=1}^{+\infty} x_j t_{jk} \right|^2,$$

where

$$\left| \sum_{j=1}^{+\infty} x_j t_{jk} \right|^2 \leq \left\{ \sum_{j=1}^{+\infty} |x_j|^2 \right\} \cdot \left\{ \sum_{j=1}^{+\infty} |t_{jk}|^2 \right\},$$

that

$$\|(T - T_n)x\|^2 \leq \left\{ \sum_{k=n+1}^{+\infty} \sum_{j=1}^{+\infty} |t_{jk}|^2 \right\} \cdot \|x\|^2.$$

It follows that

$$\|T - T_n\|^2 \leq \sum_{k=n+1}^{+\infty} \sum_{j=1}^{+\infty} |t_{jk}|^2.$$

Putting

$$a_k = \sum_{j=1}^{+\infty} |t_{jk}|^2 \geq 0,$$

it follows from the assumption that

$$\sum_{k=1}^{+\infty} a_k = \sum_{j=1}^{+\infty} \sum_{k=1}^{+\infty} |t_{jk}|^2 < +\infty.$$

Hence, to every $\varepsilon > 0$ there is an $n \in \mathbb{N}$, such that

$$\sum_{k=n+1}^{+\infty} a_k < \varepsilon^2,$$



Discover the truth at www.deloitte.ca/careers

Deloitte.

© Deloitte & Touche LLP and affiliated entities.



from which

$$\|T - T_n\|^2 \leq \sum_{k=n+1}^{+\infty} \sum_{j=1}^{+\infty} |t_{jk}|^2 = \sum_{k=n+1}^{+\infty} a_k < \varepsilon^2,$$

thus $\|T - T_n\| < \varepsilon$, and we have proved that $T_n \rightarrow T$. Because all the T_n are compact, we conclude that T is also compact.

Given another orthonormal basis (f_k) of H , and let $s_{jk} = (Tf_j, f_k)$. Then an application of Parseval's equation gives that

$$\sum_{j=1}^{+\infty} \sum_{k=1}^{+\infty} |(Te_k, f_j)|^2 = \sum_{k=1}^{+\infty} \|Te_k\|^2 = \sum_{k=1}^{+\infty} \sum_{j=1}^{+\infty} |(Te_k, e_j)|^2 = \sum_{j=1}^{+\infty} \sum_{k=1}^{+\infty} |t_{kj}|^2$$

and

$$\begin{aligned} \sum_{j=1}^{+\infty} \sum_{k=1}^{+\infty} |(Te_k, f_j)|^2 &= \sum_{j=1}^{+\infty} \sum_{k=1}^{+\infty} |(e_k, T^* f_j)|^2 = \sum_{j=1}^{+\infty} \|T^* f_j\|^2 = \sum_{j=1}^{+\infty} \sum_{k=1}^{+\infty} |(T^* f_j, f_k)|^2 \\ &= \sum_{j=1}^{+\infty} \sum_{k=1}^{+\infty} |(f_j, T f_k)|^2 = \sum_{j=1}^{+\infty} \sum_{k=1}^{+\infty} |(T f_j, f_k)|^2 = \sum_{j=1}^{+\infty} \sum_{k=1}^{+\infty} |s_{jk}|^2, \end{aligned}$$

hence,

$$\sum_{j=1}^{+\infty} \sum_{k=1}^{+\infty} |t_{jk}|^2 = \sum_{j=1}^{+\infty} \sum_{k=1}^{+\infty} |t_{kj}|^2 = \sum_{j=1}^{+\infty} \sum_{k=1}^{+\infty} |s_{jk}|^2.$$

Example 1.2 For a general Hilbert-Schmidt operator we define the Hilbert-Schmidt norm $\|\cdot\|_{\text{HS}}$ by

$$\|T\|_{\text{HS}} = \left\{ \sum_{j=1}^{+\infty} \sum_{k=1}^{+\infty} |t_{jk}|^2 \right\}^{\frac{1}{2}}.$$

Show that this is a norm, and show that

$$\|T\| \leq \|T\|_{\text{HS}}$$

for a general Hilbert-Schmidt operator T .

Write $t_{jk} = (Te_j, e_k)$, and let

$$\|T\|_{\text{HS}} = \left\{ \sum_{j=1}^{+\infty} \sum_{k=1}^{+\infty} |t_{jk}|^2 \right\}^{\frac{1}{2}}.$$

Then $\|T\|_{\text{HS}} \geq 0$, and if $\|T\|_{\text{HS}} = 0$, then $t_{jk} = (Te_j, e_k) = 0$ for all $j, k \in \mathbb{N}$, thus

$$Te_j = \sum_{k=1}^{+\infty} (Te_j, e_k) e_k = \sum_{k=1}^{+\infty} t_{jk} e_k = 0 \quad \text{for every } j \in \mathbb{N}.$$

It follows that $T = 0$ as required.

We infer from $(\alpha T e_j, e_k) = \alpha (T e_j, e_k) = \alpha t_{jk}$ that

$$\|\alpha T\|_{\text{HS}} = \left\{ |\alpha|^2 \sum_{j=1}^{+\infty} \sum_{k=1}^{+\infty} |t_{jk}|^2 \right\}^{\frac{1}{2}} = |\alpha| \cdot \|T\|_{\text{HS}}.$$

Finally, if $\mathbf{S} = (s_{jk})$ and $\mathbf{T} = (t_{jk})$, then

$$\begin{aligned} \|S + T\|_{\text{HS}}^2 &= \sum_{j=1}^{+\infty} \sum_{k=1}^{+\infty} |s_{jk} + t_{jk}|^2 \leq \sum_{j=1}^{+\infty} \sum_{k=1}^{+\infty} \left\{ |s_{jk}|^2 + 2|s_{jk}| \cdot |t_{jk}| + |t_{jk}|^2 \right\} \\ &= \|S\|_{\text{HS}}^2 + \|T\|_{\text{HS}}^2 + 2 \sum_{j=1}^{+\infty} \sum_{k=1}^{+\infty} |s_{jk}| \cdot |t_{jk}| \\ &\leq \|S\|_{\text{HS}}^2 + \|T\|_{\text{HS}}^2 + 2 \left\{ \sum_{j=1}^{+\infty} \sum_{k=1}^{+\infty} |s_{jk}|^2 \right\}^{\frac{1}{2}} \cdot \left\{ \sum_{j=1}^{+\infty} \sum_{k=1}^{+\infty} |t_{jk}|^2 \right\}^{\frac{1}{2}} \\ &= \|S\|_{\text{HS}}^2 + \|T\|_{\text{HS}}^2 + 2 \|S\|_{\text{HS}} \cdot \|T\|_{\text{HS}} = \{\|S\|_{\text{HS}} + \|T\|_{\text{HS}}\}^2, \end{aligned}$$

and we have proved the triangle inequality,

$$\|S + T\|_{\text{HS}} \leq \|S\|_{\text{HS}} + \|T\|_{\text{HS}}.$$

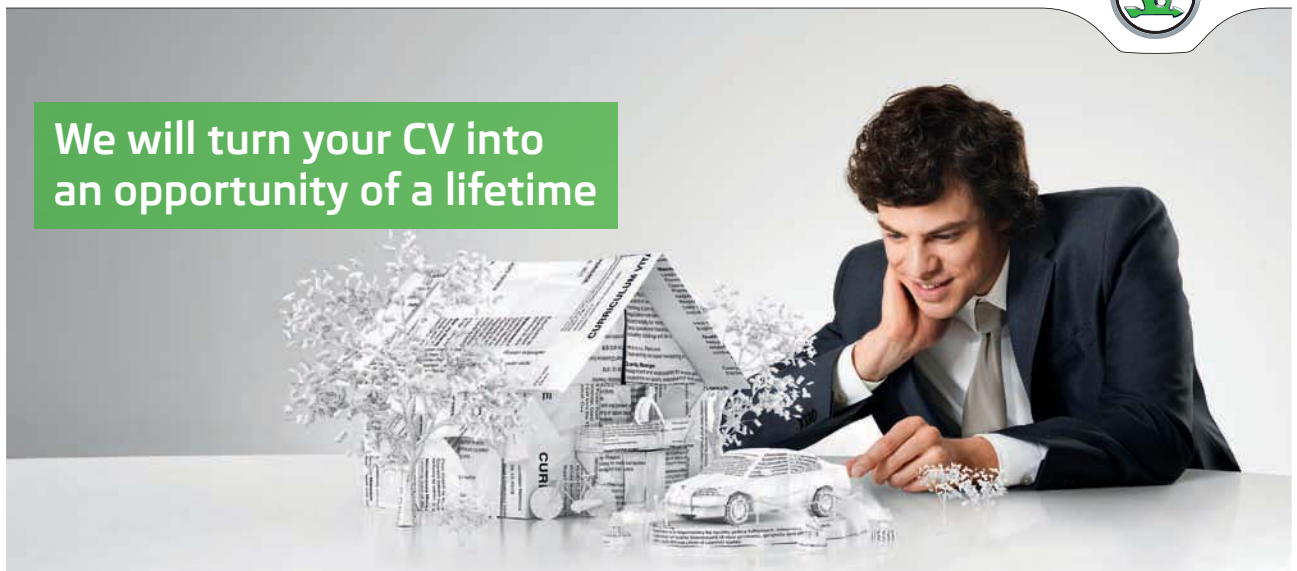
We have proved that $\|\cdot\|_{\text{HS}}$ is a norm.

SIMPLY CLEVER

ŠKODA



We will turn your CV into
an opportunity of a lifetime



Do you like cars? Would you like to be a part of a successful brand?
We will appreciate and reward both your enthusiasm and talent.
Send us your CV. You will be surprised where it can take you.

Send us your CV on
www.employerforlife.com



Finally,

$$\begin{aligned} \|Tx\|^2 &= \left\| \sum_{j=1}^{+\infty} \sum_{k=1}^{+\infty} x_j t_{jk} e_k \right\|^2 = \sum_{k=1}^{+\infty} \left| \sum_{j=1}^{+\infty} x_j t_{jk} \right|^2 \leq \sum_{k=1}^{+\infty} \sum_{j=1}^{+\infty} \sum_{\ell=1}^{+\infty} |x_j| \cdot |t_{jk}| \cdot |x_\ell| \cdot |t_{\ell k}| \\ &= \sum_{j=1}^{+\infty} \sum_{k=1}^{+\infty} \sum_{\ell=1}^{+\infty} \{|x_j| \cdot |t_{\ell k}|\} \cdot \{|x_\ell| \cdot |t_{jk}|\} \\ &\leq \left\{ \sum_{j,k,\ell=1}^{+\infty} |x_j|^2 |t_{\ell j}|^2 \right\}^{\frac{1}{2}} \cdot \left\{ \sum_{j,k,\ell=1}^{+\infty} |x_\ell|^2 |t_{jk}|^2 \right\}^{\frac{1}{2}} = \|T\|_{\text{HS}}^2 \cdot \|x\|^2, \end{aligned}$$

hence $\|Tx\| \leq \|T\|_{\text{HS}} \cdot \|x\|$ for every x , and we find that $\|T\| \leq \|T\|_{\text{HS}}$.

Example 1.3 Define for $f \in L^2(\mathbb{R})$, the operator K by

$$Kf(x) = \int_{-\infty}^{+\infty} \frac{1}{2} \exp(-|x-t|) f(t) dt.$$

Show that $Kf \in L^2(\mathbb{R})$ and that K is linear and bounded, with norm ≤ 1 .

Show that the function $\frac{1}{2} \exp(-|x-t|)$ does not belong to $L^2(\mathbb{R}^2)$, so that K is not a Hilbert-Schmidt operator.

First we see that

$$\begin{aligned} Kf(x) &= \int_{-\infty}^{+\infty} \frac{1}{2} \exp(-|x-t|) f(t) dt = \int_{-\infty}^x \frac{1}{2} e^{-x} e^t f(t) dt + \int_x^{+\infty} \frac{1}{2} e^x e^{-t} f(t) dt \\ &= \frac{1}{2} e^{-x} \int_{-\infty}^x e^t f(t) dt + \frac{1}{2} e^x \int_x^{+\infty} e^{-t} f(t) dt. \end{aligned}$$

Then

$$\begin{aligned} |Kf(x)|^2 &= \left\{ \int_{-\infty}^{+\infty} \frac{1}{2} \exp(-|x-t|) f(t) dt \right\}^2 \\ &\leq \int_{-\infty}^{+\infty} \frac{1}{2} \exp(-|x-t|) |f(t)| dt \cdot \int_{-\infty}^{+\infty} \frac{1}{2} \exp(-|x-u|) |f(u)| du \\ &= \frac{1}{4} \int_{-\infty}^{+\infty} \int_{-\infty}^{+\infty} \exp -|x-t| \exp(-|x-u|) \cdot |f(t)| \cdot |f(u)| dt du \\ &= \int_{-\infty}^{+\infty} \int_{-\infty}^{+\infty} \frac{1}{4} \exp(-|x-t| - |x-u|) \cdot |f(t)| \cdot |f(u)| dt du. \end{aligned}$$

Hence

$$\int_{-\infty}^{+\infty} |Kf(x)|^2 dx \leq \int_{-\infty}^{+\infty} \int_{-\infty}^{+\infty} \left\{ \int_{-\infty}^{+\infty} \frac{1}{4} \exp(-|x-t| - |x-u|) dx \right\} |f(t)| \cdot |f(u)| dt du.$$

If $t \leq u$, then

$$|x-t| + |x-u| = \begin{cases} t-x+u-x = t+u-2x, & \text{for } x \leq t, \\ x-t+u-x = u-t, & \text{for } t \leq x \leq u, \\ x-t+x-u = 2x-t-u, & \text{for } x \geq u. \end{cases}$$

This gives the inspiration to the following rearrangement

$$\int_{-\infty}^{+\infty} |Kf(x)|^2 dx \leq 2 \int_{-\infty}^{+\infty} \left(\int_t^{+\infty} \left\{ \int_{-\infty}^{+\infty} \frac{1}{4} \exp(-|x-t| - |x-u|) dx \right\} |f(u)| du \right) |f(t)| dt,$$

where

$$\begin{aligned} \int_{-\infty}^{+\infty} e^{-|x-t|-|x-u|} dx &= \int_{-\infty}^t e^{2x-t-u} dx + \int_t^{+\infty} e^{-u+t} dx + \int_u^{+\infty} e^{-2x+t+u} dx \\ &= \left[\frac{1}{2} e^{2x-t-u} \right]_{x=-\infty}^t + (u-t)e^{-u+t} + \left[-\frac{1}{2} e^{-2x+t+u} \right]_{x=u}^{+\infty} \\ &= \frac{1}{2} e^{t-u} + (u-t)e^{t-u} + \frac{1}{2} e^{t-u} = (u-t+1)e^{t-u}, \end{aligned}$$

and where we have assumed that $t \leq u$.

By insertion,

$$\int_{-\infty}^{+\infty} |Kf(x)|^2 dx \leq \frac{1}{2} \int_{-\infty}^{+\infty} \left\{ \int_t^{+\infty} (u-t+1)e^{t-u} |f(u)| du \right\} |f(t)| dt.$$

Then we change variables $y = u - t$ and $z = t + u$, thus

$$t = \frac{y+z}{2} \quad \text{og} \quad u = \frac{y-z}{2},$$

where $y \in [0, +\infty[$ and $z \in \mathbb{R}$. We get

$$\begin{aligned} \int_{-\infty}^{+\infty} |Kf(x)|^2 dx &\leq \frac{1}{4} \int_{-\infty}^{+\infty} \int_0^{+\infty} (y+1)e^{-y} \left| f\left(\frac{y-z}{2}\right) \right| \cdot \left| f\left(\frac{y+z}{2}\right) \right| dy dz \\ &= \frac{1}{4} \int_0^{+\infty} \left\{ \int_{-\infty}^{+\infty} \left| f\left(\frac{y-z}{2}\right) \right| \cdot \left| f\left(\frac{y+z}{2}\right) \right| dz \right\} (y+1)e^{-y} dy. \end{aligned}$$

Then for every fixed y it follows by the Cauchy-Schwarz inequality,

$$\begin{aligned} &\int_{-\infty}^{+\infty} \left| f\left(\frac{y-z}{2}\right) \right| \cdot \left| f\left(\frac{y+z}{2}\right) \right| dz \\ &\leq \left\{ \int_{-\infty}^{+\infty} \left| f\left(\frac{y-z}{2}\right) \right|^2 dz \right\}^{\frac{1}{2}} \cdot \left\{ \int_{-\infty}^{+\infty} \left| f\left(\frac{y+z}{2}\right) \right|^2 dz \right\}^{\frac{1}{2}} \\ &\left\{ 2 \int_{-\infty}^{+\infty} \left| f\left(\frac{y-z}{2}\right) \right|^2 d\left(\frac{y-z}{2}\right) \right\}^{\frac{1}{2}} \cdot \left\{ 2 \int_{-\infty}^{+\infty} \left| f\left(\frac{y-z}{2}\right) \right|^2 d\left(\frac{y+z}{2}\right) \right\}^{\frac{1}{2}} \\ &= 2\|f\|_2 \cdot \|f\|_2 = 2\|f\|_2^2, \end{aligned}$$

and we get by insertion the estimate

$$\begin{aligned} \int_{-\infty}^{+\infty} |Kf(x)|^2 dx &\leq \frac{1}{2} \int_0^{+\infty} (y+1)e^{-y} dy \cdot \|f\|_2^2 \\ &= \frac{1}{2} \left[-e^{-y}(y+1) + \int e^{-y} dy \right]_0^{+\infty} \cdot \|f\|_2^2 \\ &= \frac{1}{2} [-e^{-y}(y+2)]_0^{+\infty} \cdot \|f\|_2^2 = \|f\|_2^2, \end{aligned}$$

so we have proved that $Kf \in L^2(\mathbb{R})$ and that

$$\|Kf\|_2 \leq \|f\|_2 \quad \text{for every } f \in L^2(\mathbb{R}),$$

hence $\|K\| \leq 1$.

On the other hand, the kernel $\frac{1}{2} e^{-|x-t|}$ does not belong to $L^2(\mathbb{R})$, because we get by a formal computation that

$$\begin{aligned} \int_{-\infty}^{+\infty} \int_{-\infty}^{+\infty} \frac{1}{4} e^{-2|x-t|} dx dt &= \frac{1}{4} \int_{-\infty}^{+\infty} \left\{ 2 \int_t^{+\infty} e^{-2(x-t)} dx \right\} dt \\ &= \frac{1}{4} \int_{-\infty}^{+\infty} \left\{ \int_0^{+\infty} e^{-x} dx \right\} dt = \frac{1}{4} \int_{-\infty}^{+\infty} 1 dt = +\infty. \end{aligned}$$

Example 1.4 Let K denote the Hilbert-Schmidt operator with kernel

$$k(x, y) = \sin(x) \cos(t), \quad 0 \leq x, t \leq 2\pi.$$

Show that the only eigenvalue for K is 0.

Find an orthonormal basis for $\ker(K)$.

First notice that

$$Kf(x) = \int_0^{2\pi} k(x, t) f(t) dt = \sin(x) \cdot \int_0^{2\pi} \cos(t) \cdot f(t) dt,$$

hence $Kf(x) = a(f) \cdot \sin(x)$, where

$$a(f) = \int_0^{2\pi} \cos(t) \cdot f(t) dt \in \mathbb{C}.$$

If $\lambda \in \sigma_p(K)$, then the corresponding eigenfunction must be $f(x) = \sin(x)$. Then by insertion,

$$(K \sin)(x) = \sin(x) \int_0^{2\pi} \cos(t) \cdot \sin(t) dt = 0,$$

proving that $\lambda = 0$ is the only eigenvalue.

Now,

$$\frac{1}{\sqrt{2\pi}}, \frac{1}{\sqrt{\pi}} \cos(x), \frac{1}{\sqrt{\pi}} \sin(x), \dots, \frac{1}{\sqrt{\pi}} \cos(nx), \frac{1}{\sqrt{\pi}} \sin(nx), \dots,$$

is an orthonormal basis for $L^2([0, 2\pi])$, so $\ker(K)$ is spanned by all these with the exception of $\frac{1}{\sqrt{\pi}} \cos(x)$, in which case

$$\begin{aligned} K \left(\frac{1}{\sqrt{\pi}} \cos \right) (x) &= \sqrt{\pi} \int_0^{2\pi} \frac{1}{\sqrt{\pi}} \cos(t) \cdot \frac{1}{\sqrt{\pi}} \cos(t) dt \cdot \sin(x) \\ &= \sqrt{\pi} \cdot \sin(x) = \pi \cdot \frac{1}{\sqrt{\pi}} \sin(x), \end{aligned}$$

and we get in particular, $K^2 \equiv 0$.

Note that

$$\begin{aligned} k_2(x, t) &= \int_0^{2\pi} k(x, s)k(s, t) ds = \int_0^{2\pi} \sin(x) \cdot \cos(s) \cdot \sin(s) \cdot \cos(t) ds \\ &= \sin(x) \cdot \cos(t) \cdot \int_0^{2\pi} \sin(s) \cdot \cos(s) ds = 0, \end{aligned}$$

which agrees with $K^2 \equiv 0$.

I joined MITAS because
I wanted **real responsibility**

The Graduate Programme
for Engineers and Geoscientists
www.discovermitas.com



Month 16
I was a construction supervisor in the North Sea advising and helping foremen solve problems

Real work
International opportunities
Three work placements







Example 1.5 Let K denote the Hilbert-Schmidt operator with continuous kernel k on $L^2(I)$, where I is a closed and bounded interval. Show that all the iterated kernels K_n are continuous on I^2 and show that

$$\|k_n\|_2 \leq \|k\|_2^n.$$

Show that if $|\lambda| \|k\|_2 < 1$, then the series

$$\sum_{n=1}^{\infty} \lambda^n k_n$$

is convergent in $L^2(I)$.

Write $I = [a, b]$. It is well-known that

$$k_n(x, t) = \int_a^b f(x, s) k_{n-1}(s, t) ds.$$

The first claim is proved by induction. Assume that both $k(x, s)$ and $k_{n-1}(s, t)$ are continuous. By subtracting something and then adding it again we get

$$\begin{aligned} k_n(x, t) - k_n(x_0, t_0) &= \int_a^b \{k(x, s)k_{n-1}(s, t) - k(x_0, s)k_{n-1}(s, t)\} ds \\ &\quad + \int_a^b \{k(x_0, s)k_{n-1}(s, t) - k(x_0, s)k_{n-1}(s, t_0)\} ds \\ &= \int_a^b \{k(x, s) - k(x_0, s)\} k_{n-1}(s, t) ds \\ &\quad + \int_a^b k(x_0, s) \cdot \{k_{n-1}(s, t) - k_{n-1}(s, t_0)\} ds. \end{aligned}$$

To every $\varepsilon > 0$ there is a $\delta > 0$, such that

$$|k(x, s) - k(x_0, s)| < \varepsilon \quad \text{for } |x - x_0| < \delta \text{ and all } s \in [a, b],$$

and

$$|k_{n-1}(s, t) - k_{n-1}(s, t_0)| < \varepsilon \quad \text{for } |t - t_0| < \delta \text{ and all } s \in [a, b].$$

If therefore $|x - x_0| < \delta$ and $|t - t_0| < \delta$, then we get the following estimate,

$$\begin{aligned} |k_n(x, t) - k_n(x_0, t_0)| &\leq \int_a^b \varepsilon \cdot \|k_{n-1}\|_{\infty} dx + \int_a^b \|k\|_{\infty} \cdot \varepsilon ds \\ &= (b - a) \{\|k\|_{\infty} + \|k_{n-1}\|_{\infty}\} \varepsilon, \end{aligned}$$

and we conclude that $k_n(x, t)$ is continuous, and the claim follows by induction.

Furthermore,

$$\begin{aligned}
 \|k_n\|_2^2 &= \int_a^b \int_a^b |k_n(x, t)|^2 dx dt \\
 &= \int_a^b \int_a^b \left| \int_a^b k(x, s)k_{n-1}(s, t) ds \right| \cdot \left| \int_a^b k(x, r)k_{n-1}(r, t) dr \right| dx dt \\
 &\leq \int_a^b \int_a^b \int_a^b \int_a^b |k(x, s)| \cdot |k_{n-1}(s, t)| \cdot |k(x, r)| \cdot |k_{n-1}(r, t)| ds dr dx dt \\
 &\leq \frac{1}{2} \int_a^b \int_a^b \int_a^b \int_a^b \{ |k(x, s)|^2 |k_{n-1}(r, t)|^2 + |k_{n-1}(s, t)|^2 |k(x, r)|^2 \} ds dr dx dt \\
 &= \frac{1}{2} \{ \|k\|_2^2 \|k_{n-1}\|_2^2 + \|k_{n-1}\|_2^2 \|k\|_2^2 \} = \|k\|_2^2 \|k_{n-1}\|_2^2,
 \end{aligned}$$

and we have proved that

$$\|k_n\|_2 \leq \|k\|_2 \|k_{n-1}\|_2.$$

Hence we get for $n = 2$ that $\|k_2\|_2 \leq \|k\|_2^2$.

Assume that $\|k_{n-1}\|_2 \leq \|k\|_2^{n-1}$. Then

$$\|k_n\|_2 \leq \|k\|_2 \|k_{n-1}\|_2 \leq \|k\|_2 \cdot \|k\|_2^{n-1} = \|k\|_2^n,$$

and the claim follows by induction.

ie business school

#1 EUROPEAN BUSINESS SCHOOL
FINANCIAL TIMES 2013

#gobeyond

MASTER IN MANAGEMENT

Because achieving your dreams is your greatest challenge. IE Business School's Master in Management taught in English, Spanish or bilingually, trains young high performance professionals at the beginning of their career through an innovative and stimulating program that will help them reach their full potential.

- Choose your area of specialization.
- Customize your master through the different options offered.
- Global Immersion Weeks in locations such as London, Silicon Valley or Shanghai.

Because you change, we change with you.

www.ie.edu/master-management | mim.admissions@ie.edu |

The remaining claim is now trivial, because

$$\left\| \sum_{n=1}^{+\infty} \lambda^n k_n(x, t) \right\|_2 \leq \sum_{n=1}^{+\infty} |\lambda|^n \|k_n\|_2 \leq \sum_{n=1}^{+\infty} |\lambda|^n \|k\|_2^n = \sum_{n=1}^{+\infty} \{|\lambda| \cdot \|k\|_2\}^n = \frac{1}{1 - |\lambda| \cdot \|k\|_2},$$

where we have used that the geometric series is convergent for $|\lambda| \cdot \|k\|_2 < 1$.

Example 1.6 Let K and L denote the Hilbert-Schmidt operators with continuous kernels k and ℓ on $L^2(I)$, where I is a closed and bounded interval. We define the trace of K , $\text{tr}(K)$ by

$$\text{tr}(K) = \int_I k(x, x) dx,$$

and similarly for L .

Show that

$$|\text{tr}(KL)| \leq \|K\|_{\text{HS}} \|L\|_{\text{HS}},$$

and

$$|\text{tr}(K^n)| \leq \|K\|_{\text{HS}}^n, \quad n \geq 2.$$

Moreover, if (K_n) , (L_n) denote sequences of Hilbert-Schmidt operators like above, where

$$\|K_n - K\|_{\text{HS}} \rightarrow 0 \quad \text{and} \quad \|L_n - L\|_{\text{HS}} \rightarrow 0,$$

then

$$\text{tr}(K_n L_n) \rightarrow \text{tr}(KL).$$

Remark 1.1 We first show that the claim is not true, if we replace the Hilbert-Schmidt norm $\|\cdot\|_{\text{HS}}$ by the operator norm.

Let

$$k(x, t) = \ell(x, t) = x + t$$

be the kernel of self adjoint Hilbert-Schmidt operators K and L on $L^2([0, 1])$. It follows from Example 1.7 below that $\frac{1}{2} \pm \frac{1}{\sqrt{3}}$ are the two eigenvalues different from zero of both K and L , and the norm of K (and L) is given by the absolute value of the numerically largest eigenvalue,

$$\|K\| = \|L\| = \frac{1}{2} + \frac{1}{\sqrt{3}}.$$

Furthermore,

$$\begin{aligned} \|k\|_2^2 &= \|\ell\|_2^2 = \int_0^1 \int_0^1 (x+t)^2 dx dt = \int_0^1 \int_0^1 (x^2 + 2xt + t^2) dx dt = \int_0^1 \left[\frac{x^3}{3} + x^2 t + xt^2 \right]_{x=0}^1 dt \\ &= \int_0^1 \left\{ \frac{1}{3} + t + t^2 \right\} dt = \frac{1}{3} + \frac{1}{2} + \frac{1}{3} = \frac{7}{6}. \end{aligned}$$

Finally,

$$\operatorname{tr}(KL) = \int_0^1 \left\{ \int_0^1 (x+s)(s+x) ds \right\} dx = \int_0^1 \left\{ \int_0^1 (x+s)^2 ds \right\} dx = \|k\|_2^2 = \frac{7}{6}.$$

Thus, in this example,

$$\operatorname{tr}(KT) = \frac{7}{6} = \|k\|_2^k > \|K\|^2 = \|K\| \cdot \|L\| = \left\{ \frac{1}{2} + \frac{1}{\sqrt{3}} \right\}^2 = \frac{1}{4} + \frac{1}{3} + \frac{\sqrt{3}}{3},$$

which either can be shown numerically, or of course must follow from the theory, because we always have that $\|K\| \leq \|k\|_2$. Here we cannot have equality, if $\sigma_p(K)$ contains at least two different points $\neq 0$. \diamond

Then we turn to the example itself.

Write $I = [a, b]$, and let

$$Ku(x) = \int_a^b k(x, t)u(t) dt \quad \text{and} \quad Lu(x) = \int_a^b \ell(x, t)u(t) dt$$

for $u \in L^2([a, b])$. Then

$$\begin{aligned} ((KL)u)(x) &= K(Lu)(x) = \int_a^b k(x, t) Lu(t) dt = \int_a^b k(x, t) \left\{ \int_a^b \ell(t, s)u(s) ds \right\} dt \\ &= \int_a^b \left\{ \int_a^b k(x, t)\ell(t, s) dt \right\} u(s) ds, \end{aligned}$$

and it follows that the composition KL has the kernel

$$m(x, t) = \int_a^b k(x, s)\ell(s, t) ds.$$

Then

$$\begin{aligned} |\operatorname{tr}(KL)| &= \left| \int_a^b m(x, x) dx \right| = \left| \int_a^b \left\{ \int_a^b k(x, t)\ell(t, x) dt \right\} dx \right| \\ &\leq \int_a^b \left\{ \int_a^b |k(x, t)|^2 dt \right\}^{\frac{1}{2}} \cdot \left\{ \int_a^b |\ell(t, x)|^2 dt \right\}^{\frac{1}{2}} dx. \end{aligned}$$

Putting

$$k_1(x) = \left\{ \int_a^b |k(x, t)|^2 dt \right\}^{\frac{1}{2}} \quad \text{og} \quad \ell_1(x) = \left\{ \int_a^b |\ell(t, x)|^2 dt \right\}^{\frac{1}{2}},$$

we get $k_1, \ell_1 \in L^2([a, b])$, and it follows from the Cauchy-Schwarz inequality that

$$\begin{aligned} |\operatorname{tr}(KL)| &\leq \int_a^b k_1(x)\ell_1(x) dx \leq \{k_1(x)^2 dx\}^{\frac{1}{2}} \left\{ \int_a^b \ell_1(x)^2 dx \right\}^{\frac{1}{2}} \\ &= \left\{ \int_a^b \left(\int_a^b |k(x, t)|^2 dt \right) dx \right\}^{\frac{1}{2}} \left\{ \int_a^b \left(\int_a^b |\ell(t, x)|^2 dt \right) dx \right\}^{\frac{1}{2}} \\ &= \|k\|_2 \cdot \|\ell\|_2 = \|K\|_{\text{HS}} \cdot \|L\|_{\text{HS}}, \end{aligned}$$

and the first claim is proved.

We note that since KL has the kernel

$$m(x, t) = \int_a^b k(x, s)\ell(s, t) ds,$$

we have

$$\begin{aligned} \|KL\|_{\text{HS}}^2 &\leq \int_a^b \int_a^b |m(x, t)|^2 dx dt = \int_a^b \left\{ \int_a^b \left| \int_a^b k(x, s)\ell(s, t) ds \right|^2 dx \right\} dt \\ &\leq \int_a^b \left(\int_a^b \left\{ \left(\int_a^b |k(x, s)|^2 ds \right)^{\frac{1}{2}} \left(\int_a^b |\ell(s, t)|^2 ds \right)^{\frac{1}{2}} \right\}^2 dx \right) dt \\ &= \int_a^b \left(\int_a^b \left\{ \left(\int_a^b |k(x, s)|^2 ds \right) \cdot \left(\int_a^b |\ell(s, t)|^2 ds \right) \right\} dx \right) dt \\ &= \int_a^b \int_a^b |k(x, s)|^2 ds dx \cdot \int_a^b \int_a^b |\ell(s, t)|^2 ds dt = \|k\|_2^2 \cdot \|\ell\|_2^2 = \|K\|_{\text{HS}}^2 \cdot \|L\|_{\text{HS}}^2. \end{aligned}$$

This proves that we always have

$$(1) \|KL\|_{\text{HS}} \leq \|K\|_{\text{HS}} \cdot \|L\|_{\text{HS}}.$$

Recall for $n = 1$ that

$$\text{tr}(K) = \int_a^b k(x, x) dx.$$

Choosing $k(x, x) = 1$ and $k(x, t)$ continuous, such that $\|k\|_2 < \varepsilon$, we get

$$\text{tr}(K) = b - a \quad \text{and} \quad \|K\|_{\text{HS}}^2 < \varepsilon,$$

which shows that the formula is not true for $n = 1$.

On the other hand, if $n \geq 2$, then it follows from the first question and (1) that

$$|\text{tr}(K^n)| = |\text{tr}(K K^{n-1})| \leq \|K\|_{\text{HS}} \|K^{n-1}\|_{\text{HS}} \leq \|K\|_{\text{HS}} \|K\|_{\text{HS}}^{n-1} = \|K\|_{\text{HS}}^n.$$

Finally, we note that for any scalar λ and any Hilbert-Schmidt operators,

$$\text{tr}(K + \lambda L) = \int_a^b \{k(x, x) + \lambda \ell(x, x)\} dx = \text{tr}(K) + \lambda \text{tr}(L),$$

proving that the *trace* is linear on the vector space of all Hilbert-Schmidt operators. Then we get

$$\begin{aligned} \text{tr}(KL) - \text{tr}(K_n L_n) &= \text{tr}(KL - K_n L_n) = \text{tr}(KL - K L_n + K L_n - K_n L_n) \\ &= \text{tr}(K(L - L_n)) + \text{tr}((K - K_n)L_n) \\ &= \text{tr}(K(L - L_n)) + \text{tr}((K - K_n)(L_n - L)) + \text{tr}((K - K_n)L), \end{aligned}$$

and it follows from the assumptions and the first part of the example that

$$\begin{aligned} &|\text{tr}(KL) - \text{tr}(K_n L_n)| \\ &\leq \|K\|_{\text{HS}} \|L - L_n\|_{\text{HS}} + \|K - K_n\|_{\text{HS}} \|L - L_n\|_{\text{HS}} + \|K - K_n\|_{\text{HS}} \|L\|_{\text{HS}} \rightarrow 0 \quad \text{for } n \rightarrow +\infty. \end{aligned}$$

Example 1.7 Let K denote the Hilbert-Schmidt operator on $L^2([0, 1])$ with kernel

$$k(x, t) = x + t.$$

Find all eigenvalues and eigenfunctions for K .
Solve the equation

$$Ku = \mu u + f, \quad f \in L^2([0, 1]),$$

when μ is not in the spectrum for K .

It follows from

$$(2) \quad Kf(x) = x \int_0^1 f(t) dt + \int_0^1 t \cdot f(t) dt,$$

that every eigenfunction corresponding to an eigenvalue $\lambda \neq 0$ must have the form $f(x) = ax + b$. By insertion into (2) we get

$$Kf(x) = x \int_0^1 (at + b) dt + \int_0^1 (at^2 + bt) dt = \left\{ \frac{a}{2} + b \right\} x + \left\{ \frac{a}{3} + \frac{b}{2} \right\}.$$



STUDY AT A TOP RANKED INTERNATIONAL BUSINESS SCHOOL

Reach your full potential at the Stockholm School of Economics, in one of the most innovative cities in the world. The School is ranked by the Financial Times as the number one business school in the Nordic and Baltic countries.

Visit us at www.hhs.se






This expression is equal to $\lambda(ax + b)$, if and only if (a, b) and $\left(\frac{a}{2} + b, \frac{a}{3} + \frac{b}{2}\right)$ are proportion, thus if and only if

$$0 = \begin{vmatrix} \frac{a}{2} + b & \frac{a}{3} + \frac{b}{2} \\ a & b \end{vmatrix} = \frac{ab}{2} + b^2 - \frac{a^3}{3} - \frac{ab}{2} = b^2 - \frac{a^2}{3},$$

hence if and only if $b = \pm \frac{1}{\sqrt{3}} a$. Since

$$\lambda a = \frac{a}{2} + b = \left\{ \frac{1}{2} \pm \frac{1}{\sqrt{3}} \right\} a,$$

the corresponding eigenvalues are $\lambda = \frac{1}{2} \pm \frac{1}{\sqrt{3}}$.

For $\lambda_1 = \frac{1}{2} + \frac{1}{\sqrt{3}}$ we get the eigenfunction $f_1(x) = x + \frac{1}{\sqrt{3}}$.

For $\lambda_2 = \frac{1}{2} - \frac{1}{\sqrt{3}}$ we get the eigenfunction $f_2(x) = x - \frac{1}{\sqrt{3}}$.

Finally, K is trivially self adjoint, thus $\lambda = 0$ is an eigenvalue for every function

$$f \in \left\{ \text{span} \left(x + \frac{1}{\sqrt{3}}, x - \frac{1}{\sqrt{3}} \right) \right\}^\perp = \{ \text{span}(1, x) \}^\perp,$$

hence for every function $f \in L^2([0, 1])$, for which

$$\int_0^1 f(t) dt = 0 \quad \text{og} \quad \int_0^1 t f(t) dt = 0.$$

Now, $k(x, t) = \overline{k(t, x)}$, so K is self adjoint. Therefore, if we put

$$\varphi_1(x) = \frac{f_1}{\|f_1\|_2} \quad \text{and} \quad \varphi_2 = \frac{f_2}{\|f_2\|_2},$$

then the operator K is described by

$$(3) \quad Ku = \lambda_1 (u, \varphi_1) \varphi_1 + \lambda_2 (u, \varphi_2) \varphi_2.$$

If $(f, \varphi_1) = (f, \varphi_2) = 0$, then it follows by a simple check that the solution of the equation

$$Ku = \mu u + f, \quad \text{hvor } \mu \notin \left\{ 0, \frac{1}{2} + \frac{1}{\sqrt{3}}, \frac{1}{2} - \frac{1}{\sqrt{3}} \right\},$$

is given by $u = -\frac{1}{\mu} f$.

Then assume that $f = a \varphi_1 + b \varphi_2$. The equation $Ku = \mu u + f$ can now be written in the form

$$\lambda_1 (u, \varphi_1) \varphi_1 + \lambda_2 (u, \varphi_2) \varphi_2 = \mu \sum_{n=1}^{\infty} (u, \varphi_n) \varphi_n + a \varphi_1 + b \varphi_2,$$

which implies that

$$u = c_1 \varphi_1 + c_2 \varphi_2,$$

where

$$c_1 = (u, \varphi_1) = \frac{a}{\lambda_1 - \mu} = \frac{1}{\lambda_1 - \mu} (f, \varphi_1),$$

and

$$c_2 = (u, \varphi_2) = \frac{b}{\lambda_2 - \mu} = \frac{1}{\lambda_2 - \mu} (f, \varphi_2).$$

The equation being linear, it follows in general from the rewriting

$$Ku - \mu u = f = (f, \varphi_1) \varphi_1 + (f, \varphi_2) \varphi_2 + \{f - (f, \varphi_1) \varphi_1 - (f, \varphi_2) \varphi_2\},$$

that

$$\begin{aligned} u &= \frac{1}{\lambda_1 - \mu} (f, \varphi_1) \varphi_1 + \frac{1}{\lambda_2 - \mu} (f, \varphi_2) \varphi_2 - \frac{1}{\mu} f + \frac{1}{\mu} (f, \varphi_1) \varphi_1 + \frac{1}{\mu} (f, \varphi_2) \varphi_2 \\ &= \frac{\lambda_1}{\mu(\lambda_1 - \mu)} (f, \varphi_1) \varphi_1 + \frac{\lambda_2}{\mu(\lambda_2 - \mu)} (f, \varphi_2) \varphi_2 - \frac{1}{\mu} f = A \varphi_1 + B \varphi_2 - \frac{1}{\mu} f, \end{aligned}$$

which *in principle* can be written explicitly by means of the functions $f_i(x)$, $i = 1, 2$. We shall, however, not waste our time on that, because the result will look extremely nasty.

Example 1.8 Let K denote the Hilbert-Schmidt operator on $L^2\left(\left[-\frac{\pi}{2}, \frac{\pi}{2}\right]\right)$ with kernel

$$k(x, t) = \cos(x - t).$$

Find all eigenvalues and eigenfunctions for K .

Solve the equation

$$Ku = \mu u + f, \quad f \in L^2\left(\left[-\frac{\pi}{2}, \frac{\pi}{2}\right]\right),$$

when μ is not in the spectrum for K .

Obviously, K is self adjoint.

It follows in general from

$$\cos(x - t) = \cos(x) \cdot \cos(t) + \sin(x) \cdot \sin(t),$$

that

$$(4) \quad Kf(x) = \cos(x) \int_{-\frac{\pi}{2}}^{\frac{\pi}{2}} f(t) \cos(t) dt + \sin(x) \int_{-\frac{\pi}{2}}^{\frac{\pi}{2}} f(t) \sin(t) dt.$$

Then any eigenfunction corresponding to some eigenvalue $\lambda \neq 0$ must be of the structure

$$f(x) = a \cdot \cos(x) + b \cdot \sin(x).$$

By insertion into (4),

$$\begin{aligned} Kf(x) &= \cos(x) \int_{-\frac{\pi}{2}}^{\frac{\pi}{2}} \{a \cdot \cos^2 t + b \cdot \sin t \cos t\} dt + \sin(x) \int_{-\frac{\pi}{2}}^{\frac{\pi}{2}} \{a \cdot \sin t \cos t + b \cdot \sin^2 t\} dt \\ &= \left\{ \frac{a\pi}{2} + 0 \right\} \cos(x) + \left\{ 0 + \frac{b\pi}{2} \right\} \sin(x) = \frac{\pi}{2} \{a \cos(x) + b \sin(x)\} = \frac{\pi}{2} f(x), \end{aligned}$$

hence $f(x) = a \cdot \cos(x) + b \cdot \sin(x)$ is for every pair $(a, b) \neq (0, 0)$ an eigenfunction corresponding to the eigenvalue $\lambda = \frac{\pi}{2}$.

For $\lambda = 0$ we get the eigenspace $\{\cos(x), \sin(x)\}^\perp$ in $L^2\left(\left[-\frac{\pi}{2}, \frac{\pi}{2}\right]\right)$.

ALTERNATIVELY, we see that

$$\cos(x-t) = \frac{1}{2} e^{ix} e^{-it} + \frac{1}{2} e^{-ix} e^{it}.$$

We get from

$$\int_{-\frac{\pi}{2}}^{\frac{\pi}{2}} |e^{\pm ix}|^2 dx = \pi,$$

the normed functions

$$\varphi_1(x) = \frac{1}{\sqrt{\pi}} e^{ix} \quad \text{and} \quad \varphi_{-1} = \frac{1}{\sqrt{\pi}} e^{-ix},$$

where

$$(\varphi_1, \varphi_{-1}) = \int_{-\frac{\pi}{2}}^{\frac{\pi}{2}} \varphi_1(x) \overline{\varphi_{-1}(x)} dx = \frac{1}{\pi} \int_{-\frac{\pi}{2}}^{\frac{\pi}{2}} e^{2ix} dx = \frac{1}{2i\pi} \{e^{i\pi} - e^{-i\pi}\} = 0,$$

hence

$$k(x, t) = \cos(x-t) = \frac{\pi}{2} \varphi_1(x) \overline{\varphi_1(t)} + \frac{\pi}{2} \varphi_{-1}(x) \overline{\varphi_{-1}(t)}.$$

We obtain directly that $\lambda = \frac{\pi}{2}$ is the only eigenvalue $\neq 0$, thus $\|K\| = \frac{\pi}{2}$, and the eigenfunctions are φ_1 and φ_{-1} .

Remark 1.2 A basis for $L^2\left(\left[-\frac{\pi}{2}, \frac{\pi}{2}\right]\right)$ is e.g.

$$\frac{1}{\sqrt{2\pi}}, \frac{1}{\sqrt{\pi}} \cos 2x, \frac{1}{\sqrt{\pi}} \sin 2x, \frac{1}{\sqrt{\pi}} \cos 4x, \frac{1}{\sqrt{\pi}} \sin 4x, \dots,$$

from which it follows that $\{\cos(x), \sin(x)\}^\perp$ may be difficult to describe. \diamond

It follows from $\overline{k(t, x)} = k(x, t)$ that K is self adjoint, which also was noted previously. We may therefore apply the standard method where we expand after the eigenfunctions.

First choose f , such that

$$\int_{-\frac{\pi}{2}}^{\frac{\pi}{2}} f(t) \cos t \, dt = \int_{-\frac{\pi}{2}}^{\frac{\pi}{2}} f(t) \sin t \, dt = 0.$$

Then $Kf = 0$, and we conclude that $u = -\frac{1}{\mu}f$ is the only solution.

We get in the general case that

$$\begin{aligned} u &= \sum_{n=1}^{+\infty} (u, \varphi_n) \varphi_n = \frac{1}{\frac{\pi}{2} - \mu} \{(f, \varphi_1) \varphi_1 + (f, \varphi_2) \varphi_2\} - \frac{1}{\mu} f + \frac{1}{\mu} (f, \varphi_1) \varphi_1 + \frac{1}{\pi} (f, \varphi_2) \varphi_2 \\ &= \frac{\frac{\pi}{2}}{\mu(\frac{\pi}{2} - \mu)} \{(f, \varphi_1) \varphi_1 + (f, \varphi_2) \varphi_2\} - \frac{1}{\mu} f. \end{aligned}$$



#1
in eco-friendly
attitude

**STUDY AT
LINKÖPING UNIVERSITY, SWEDEN**
RANKED AMONG TOP 50 UNIVERSITIES UNDER 50

Interested in Strategy and Management in International Organisations? Kick-start your career with a master's degree from Linköping University, Sweden.

→ **Click here!**

 **Linköping University**



Now,

$$\varphi_i = \frac{f_i}{\|f_i\|_2}, \quad i = 1, 2,$$

where $f_1(x) = \cos x$ and $f_2(x) = \sin x$, and $\|f_1\|_2^2 = \|f_2\|_2^2 = \frac{\pi}{2}$, hence

$$\begin{aligned} u &= \frac{\frac{\pi}{2}}{\mu(\frac{\pi}{2} - \mu)} \cdot \frac{1}{\frac{\pi}{2}} \{(f, \cos t) \cos(x) + (f, \sin t) \sin(x)\} - \frac{1}{\mu} f \\ &= \frac{1}{\mu(\frac{\pi}{2} - \mu)} \int_{-\frac{\pi}{2}}^{\frac{\pi}{2}} f(t) \cos t \, dt \cdot \cos(x) + \frac{1}{\mu(\frac{\pi}{2} - \mu)} \int_{-\frac{\pi}{2}}^{\frac{\pi}{2}} f(t) \sin t \, dt \cdot \sin(x) - \frac{1}{\mu} f(x). \end{aligned}$$

Notice that this expression can be written as

$$u = \frac{1}{\mu(\frac{\pi}{2} - \mu)} \int_{-\frac{\pi}{2}}^{\frac{\pi}{2}} \cos(x-t) f(t) \, dt - \frac{1}{\mu} f(x) = \frac{1}{\mu(\frac{\pi}{2} - \mu)} Kf - \frac{1}{\mu} f.$$

We have assumed that

$$\mu \notin \sigma(K) = \sigma_p(K) = \left\{0, \frac{\pi}{2}\right\}.$$

Example 1.9 Let K denote the Hilbert-Schmidt operator on $L^2([-\pi, \pi])$ with kernel

$$k(x, t) = \{\cos(x) + \cos(t)\}^2.$$

Find all eigenvalues and eigenfunctions for K , and find an orthonormal basis for $\ker(K)$.

By a simple computation,

$$\begin{aligned} k(x, t) &= (\cos x + \cos t)^2 = \cos^2 x + 2 \cos x \cos t + \cos^2 t \\ &= \frac{1}{2} \cos 2x + 2 \cos x \cos t + \frac{1}{2} \cos 2t + \frac{1}{2} \\ &= \frac{1}{2} \cos 2x + 2 \cos x \cos t + \left\{1 + \frac{1}{2} \cos 2t\right\} \cdot 1. \end{aligned}$$

Hence

$$\begin{aligned} (5) \quad Kf(x) &= \cos 2x \int_{-\pi}^{\pi} \frac{1}{2} f(t) \, dt + \cos x \int_{-\pi}^{\pi} 2 f(t) \cos t \, dt \\ &\quad + \int_{-\pi}^{\pi} f(t) \, dt + \int_{-\pi}^{\pi} \frac{1}{2} f(t) \cos 2t \, dt. \end{aligned}$$

Therefore, any eigenfunction corresponding to an eigenvalue $\lambda \neq 0$ must be of the form

$$f(x) = a \cdot \cos 2x + b \cdot \cos x + c,$$

where we shall find the constants a , b and c . We get by insertion into (5) that

$$\begin{aligned} Kf(x) &= \cos 2x \int_{-\pi}^{\pi} \frac{1}{2} (a \cdot \cos 2t + b \cdot \cos t + c) dt + \cos x \int_{-\pi}^{\pi} 2(a \cos 2t + b \cos t + c) \cos t dt \\ &\quad + \int_{-\pi}^{\pi} (a \cdot \cos 2t + b \cdot \cos t + c) dt \\ &\quad + \int_{-\pi}^{\pi} \frac{1}{2} (a \cdot \cos 2t + b \cdot \cos t + c) \cdot \cos 2t dt \\ &= c\pi \cdot \cos 2x + 2b\pi \cos x + 2\pi c + \frac{a\pi}{2}. \end{aligned}$$

This expression is equal to $\lambda a \cdot \cos 2x + \lambda b \cdot \cos x + \lambda c$, if and only if

$$\lambda a = c\pi, \quad \lambda b = 2\pi b, \quad \lambda c = 2\pi c + \frac{a\pi}{2}.$$

We immediately get the eigenvalue $\lambda = 2\pi$ with its corresponding eigenfunction $\cos x$.

The other eigenfunctions are found in the following way: The vectors (a, c) and $(c\pi, 2c\pi + \frac{a\pi}{2})$ must be proportional, so

$$0 = \begin{vmatrix} c & 2c + \frac{a}{2} \\ a & c \end{vmatrix} = c^2 - 2ac - \frac{a^2}{2} = (c - a)^2 - \frac{3}{2}a^2,$$

hence

$$c = a \pm \sqrt{\frac{3}{2}} a = \left\{ 1 \pm \sqrt{\frac{3}{2}} \right\} a,$$

corresponding to

$$\lambda = \frac{c\pi}{a} = \left\{ 1 \pm \sqrt{\frac{3}{2}} \right\} \pi.$$

For $\lambda_1 = \left\{ 1 + \sqrt{\frac{3}{2}} \right\} \pi$ we get the eigenfunction

$$f_1(x) = \cos 2x + 1 + \sqrt{\frac{3}{2}} \quad \left[= 2 \cos^2 x + \sqrt{\frac{3}{2}} \right].$$

For $\lambda_2 = \left\{ 1 - \sqrt{\frac{3}{2}} \right\} \pi$ we get the eigenfunction

$$f_2(x) = \cos 2x + 1 - \sqrt{\frac{3}{2}} \quad \left[= 2 \cos^2 x - \sqrt{\frac{3}{2}} \right].$$

For $\lambda = 2\pi$ we get the eigenfunction $f_3(x) = \cos x$.

There is no reason here to norm these eigenfunctions. We only notice that they span the same subspace of $L^2([-\pi, \pi])$ as 1 , $\cos x$, and $\cos 2x$ do.

It follows from $\overline{k(t, x)} = k(x, t)$ that K is self adjoint, so the null-space is simply the orthogonal complement of the subspace mentioned above. Thus we conclude that $\ker(K)$ is spanned by

$$\sin x, \sin 2x, \cos 3x, \sin 3x, \cos 4x, \sin 4x, \dots,$$

i.e. of the usual trigonometric basis with the exception of $1, \cos x$ and $\cos 2x$.

Example 1.10 Let K denote a self adjoint Hilbert-Schmidt operator on $L^2(I)$ with kernel k . Show that $\|K\| = \|k\|_2$ if and only if the spectrum for K consists of at most two points.

It follows from K being self adjoint that $\overline{k(t, x)} = k(x, t)$ and there exist an ortonormal sequence (φ_n) in $L^2(I)$ and a sequence (λ_n) of real numbers with $|\lambda_1| \geq |\lambda_2| \geq \dots$, where either $\lambda_n = 0$ eventually, or $\lambda_n \rightarrow 0$, such that

$$(6) \quad Ku = \sum_{n=1}^{+\infty} \lambda_n (u, \varphi_n) \varphi_n \quad \text{for } u \in L^2(I),$$

where every φ_n is an eigenfunction of the corresponding $\lambda_n \in \sigma_p(K)$, and where 0 is either an eigenvalue or belongs to the continuous spectrum $\sigma_c(K)$, and where

$$\sigma(K) = \{0\} \cup \sigma_p(K).$$

We shall prove that $\|K\| = \|k\|_2$, if and only if $\sigma(K)$ contains at most two points.

- 1) If $\sigma(K)$ only consists of one point, then $\sigma(K) = \{0\}$, and $Ku \equiv 0$, thus $k(x, t) = 0$ almost everywhere, and it follows trivially that $\|K\| = \|k\|_1 = 0$.
- 2) If $\sigma(K)$ contains two points, then it follows from the introducing argument that we necessarily must have

$$\sigma(M) = \{0, \lambda\},$$

so the operator is described by

$$Ku = (u, \varphi) \varphi = \lambda \int_a^b \varphi(x) \overline{\varphi(t)} u(t) dt,$$

from which we derive that

$$k(x, t) = \lambda \varphi(t) \varphi(x).$$

Clearly, $\|K\| = \lambda$. Because $\|\varphi\|_2 = 1$, we get

$$\|k\|_2^2 = \int_a^b \int_a^b |k(x, t)|^2 dx dt = |\lambda|^2 \int_a^b \int_a^b |\varphi(x)|^2 |\varphi(t)|^2 dx dt = |\lambda|^2.$$

Hence $\|k\|_2 = |\lambda| = \|K\|$ in this case.

- 3) If $\sigma(K)$ contains more than two points, then

$$\|K\| = \max |\lambda_n| = |\lambda_1|.$$

Furthermore, we get by the computation

$$Ku(x) = \int_I k(x, y) u(t) dt = \sum_{n=1}^{+\infty} \lambda_n (u, \varphi_n) \varphi_n(x) = \int_I \sum_{n=1}^{+\infty} \lambda_n \varphi_n(x) \overline{\varphi_n(t)} u(t) dt,$$

that

$$\|k\|_2^2 = \sum_{n=1}^{+\infty} \lambda_n^2 > \lambda_1^2 = \|K\|^2,$$

and the claim is proved.

“I studied English for 16 years but...
...I finally learned to speak it in just six lessons”
Jane, Chinese architect

ENGLISH OUT THERE

Click to hear me talking before and after my unique course download

Example 1.11 Let $\{e_1, e_2, \dots, e_p\}$ denote a finite orthonormal set in $L^2(I)$, and let the Hilbert-Schmidt operator K be given by the kernel

$$k(x, y) = \sum_{i=1}^p \sum_{j=1}^p k_{ij} e_i(x) e_j(y).$$

Find the trace $\text{tr}(K)$.

We say that the operator K has a canonical kernel of finite rank.

This example is trivial,

$$\text{tr}(K) = \int_I k(x, x) dx = \int_I \sum_{i=1}^p \sum_{j=1}^p k_{ij} e_i(x) e_j(x) dx = \sum_{i=1}^p \sum_{j=1}^p k_{ij} \delta_{ij} = \sum_{i=1}^p k_{ii}.$$

Note that this corresponds to the trace of matrix (k_{ij}) .

Example 1.12 Denote by K a self adjoint Hilbert-Schmidt operator on $L^2(I)$ of kernel k . Prove that K is a general Hilbert-Schmidt operator (cf. the definition in EXAMPLE 1.1), and find the Hilbert-Schmidt norm $\|K\|_{\text{HS}}$.

Put

$$Ku = \sum_{n=1}^{+\infty} \lambda_n (u, \varphi_n) \varphi_n.$$

It follows from VENTUS, HILBERT SPACES ETC., EXAMPLE 2.7 that

$$t_{jk} = (K\varphi_j, \varphi_k) = \left(\sum_{n=1}^{+\infty} \lambda_n (\varphi_j, \varphi_n) \varphi_n, \varphi_k \right) = (\lambda_j \varphi_j, \varphi_k) = \lambda_j \delta_{jk},$$

thus $t_{jj} = \lambda_j$ and $t_{jk} = 0$ for $j \neq k$.

Then by EXAMPLE 1.1, K is a general Hilbert-Schmidt operator, if

$$\sum_{j=1}^{+\infty} \sum_{k=1}^{+\infty} |t_{jk}|^2 < +\infty,$$

because it was proved that this number is independent of the choice of orthonormal basis. Furthermore, it follows from EXAMPLE 1.2 that

$$\|K\|_{\text{HS}} = \left\{ \sum_{j=1}^{+\infty} \sum_{k=1}^{+\infty} |t_{jk}|^2 \right\}^{\frac{1}{2}}.$$

In the present case we get

$$\|K\|_{\text{HS}} = \left\{ \sum_{j=1}^{+\infty} \sum_{k=1}^{+\infty} |\lambda_j|^2 \delta_{jk} \right\}^{\frac{1}{2}} = \left\{ \sum_{j=1}^{+\infty} |\lambda_j|^2 \right\}^{\frac{1}{2}} = \|k\|_2.$$

Example 1.13 *Let*

$$k(x, t) = \{\sin(x) + \sin(t)\}^2 - \frac{1}{8}$$

be the kernel for a Hilbert-Schmidt operator K on the complex Hilbert space $L^2([-\pi, \pi])$.

Show that K is self adjoint and express the range $K(L^2([-\pi, \pi]))$ of K with the help of the non-normalized basis

$$1, \cos(x), \sin(x), \cos(2x), \sin(2x), \dots$$

Find all non-zero eigenvalues and corresponding eigenfunctions for K , and determine $\sigma(K)$.

Solve the equation $Ku = \pi u - \frac{5\pi}{4}$ in $L^2([-\pi, \pi])$.

1) Clearly, $k(x, t) \in L^2([-\pi, \pi] \times [-\pi, \pi])$, and

$$\overline{k(t, x)} = (\sin t + \sin x)^2 - \frac{1}{8} = k(x, t),$$

thus $k(x, t)$ is Hermitian, and K is a self adjoint Hilbert-Schmidt-operator. It follows from

$$\begin{aligned} k(x, t) &= (\sin x + \sin t)^2 - \frac{1}{8} = \sin^2 x + 2 \sin x \cdot \sin t + \sin^2 t - \frac{1}{8} \\ &= -\frac{1}{2} \cos 2x + 2 \sin x \cdot \sin t - \frac{1}{2} \cos 2t + \frac{7}{8}, \end{aligned}$$

that

$$\begin{aligned} (7) \quad Kf(x) &= \left\{ -\frac{1}{2} \int_{-\pi}^{\pi} f(t) dt \right\} \cos 2x + \left\{ 2 \int_{-\pi}^{\pi} f(t) \sin t dt \right\} \sin x \\ &\quad + \left\{ -\frac{1}{2} \int_{-\pi}^{\pi} f(t) \cos 2t dt + \frac{7}{8} \int_{-\pi}^{\pi} f(t) dt \right\} \cdot 1, \end{aligned}$$

and we conclude that the range $K(L^2([-\pi, \pi]))$ is spanned by $1, \sin x$ and $\cos 2x$.

(Choose e.g. suitable linear combinations of these three functions in order to conclude that the dimension is 3).

2) An eigenfunction f corresponding to an eigenvalue $\lambda \neq 0$ must necessarily lie in the range, thus it is of the form

$$f(x) = a \cdot \cos 2x + b \cdot \sin x + c, \quad a, b, c \in \mathbb{C}.$$

When we insert this expression into (7) and then apply that $1, \sin x$ and $\cos 2x$ are mutually orthogonal, we get

$$\begin{aligned} Kf(x) &= \left\{ -\frac{1}{2} c \cdot 2\pi \right\} \cos 2x + \left\{ 2b \cdot \frac{2\pi}{2} \right\} \sin x + \left\{ -\frac{1}{2} a \cdot \frac{2\pi}{2} + \frac{7}{8} c \cdot 2\pi \right\} \cdot 1 \\ &= -c\pi \cdot \cos 2x + 2b\pi \cdot \sin x + \left\{ \frac{7\pi}{4} c - \frac{\pi}{2} a \right\} \cdot 1. \end{aligned}$$

We have for comparison,

$$\lambda f(x) = \lambda a \cdot \cos 2x + \lambda b \cdot \sin x + \lambda c \cdot 1.$$

The coefficient b occurs only in connection with $\sin x$, hence we conclude that $\sin x$ is an eigenfunction corresponding to the eigenvalue $\lambda = 2\pi$.

Assume that $b = 0$. If $a \cdot \cos 2x + c$ is an eigenfunction, then the vectors

$$\left(-c\pi, \frac{7\pi}{4}c - \frac{\pi}{2}a\right) = \pi \left(-c, \frac{7}{4}c - \frac{1}{2}a\right) \quad \text{og } (a, c)$$

must be proportional with the eigenvalue $\lambda = -\frac{c}{a}\pi$ as the factor of proportion. Thus we get the condition

$$\begin{vmatrix} a & -c \\ c & \frac{7}{4}c - \frac{1}{2}a \end{vmatrix} = c^2 + \frac{7}{4}ac - \frac{1}{2}a^2 = 0.$$

By solving this equation with respect to c we get

$$c = -\frac{7}{8}a \pm \sqrt{\frac{49}{64}a^2 + \frac{1}{2}a^2} = -\frac{7}{8}a \pm \sqrt{\frac{81}{64}a^2} = -\frac{7}{8}a \pm \frac{9}{8}a.$$

We have now two possibilities:

- a) For $c = -\frac{7}{8}a - \frac{9}{8}a = -2a$ we get $\lambda = -\frac{c}{a}\pi = 2\pi$, corresponding to the eigenfunction $\cos 2x - 2$.
- b) For $c = -\frac{7}{8}a + \frac{9}{8}a = \frac{1}{4}a$ we get $\lambda = -\frac{c}{a}\pi = -\frac{\pi}{4}$, corresponding to the eigenfunction $\cos 2x + \frac{1}{4}$.

Summing up,

$$\begin{aligned} \lambda_1 &= 2\pi, & \varphi_1(x) &= \sin x, \\ \lambda_2 &= 2\pi, & \varphi_2(x) &= \cos 2x - 2, \\ \lambda_3 &= -\frac{\pi}{4}, & \varphi_3(x) &= \cos 2x + \frac{1}{4}. \end{aligned}$$

Notice that $\lambda_1 = \lambda_2$, and that the eigenfunctions are not normed.

It follows e.g. from $(K \cos)(x) = 0$ that $\ker(K) \neq \emptyset$, thus

$$\sigma(K) = \sigma_p = \left\{0, -\frac{\pi}{2}, 2\pi\right\}.$$

- 3) The equation $Ku = \pi u - \frac{5\pi}{4}$ can be solved in several ways:

First method. The coefficient π of u on the right hand side of the equation does not belong to the spectrum, $\pi \notin \sigma(K)$, hence the solution is unique. Because

$$-\frac{5\pi}{4} = \frac{5\pi}{9}(\cos 2x - 2) - \frac{5\pi}{9}\left(\cos 2x + \frac{1}{4}\right),$$

we see that $-\frac{5\pi}{4}$ lies in the subspace spanned by the eigenvectors

$$\varphi_2(x) = \cos 2x - 2 \quad \text{and} \quad \varphi_3(x) = \cos 2x + \frac{1}{4}.$$

Thus we *guess* a solution of the structure

$$u(x) = a \cdot (\cos 2x - 2) + b \cdot \left(\cos 2x + \frac{1}{4} \right).$$

We get by insertion of this structure that

$$\begin{aligned} Ku(x) - \pi u(x) &= 2\pi a \cdot (\cos 2x - 2) - \frac{\pi}{4} b \cdot \left(\cos 2x + \frac{1}{4} \right) \\ &\quad - \pi a (\cos 2x - 2) - \pi b \left(\cos 2x + \frac{1}{4} \right) \\ &= \pi a (\cos 2x - 2) - \frac{5\pi}{4} b \left(\cos 2x + \frac{1}{4} \right) \\ &= \pi \left(a - \frac{5}{4} b \right) \cos 2x - \pi \left(2a + \frac{5}{16} - b \right). \end{aligned}$$

Excellent Economics and Business programmes at:



**university of
 groningen**




**“The perfect start
 of a successful,
 international career.”**

CLICK HERE
 to discover why both socially
 and academically the University
 of Groningen is one of the best
 places for a student to be

www.rug.nl/feb/education



This expression is equal to $-\frac{5\pi}{4}$, if

$$a = \frac{5}{4}b \quad \text{and} \quad 2 \cdot \frac{5}{4}b + \frac{1}{4} \cdot \frac{5}{4}b = \frac{5}{4},$$

hence $\frac{9}{4}b = 1$ and $b = \frac{4}{9}$, $a = \frac{5}{9}$. Finally, we get by insertion,

$$u(x) = \frac{5}{9}(\cos 2x - 2) + \frac{4}{9} \left(\cos 2x + \frac{1}{4} \right) = \cos 2x - 1 = -2 \sin^2 x.$$

Method 1a. A variant of the FIRST METHOD is to guess a solution of the form

$$u(x) = a \cdot \cos 2x + c.$$

Then apply the previous computation from (2) to get

$$Ku(x) = -c\pi \cdot \cos 2x + \left\{ \frac{7\pi}{4}c - \frac{\pi}{2}a \right\},$$

and

$$-\pi u(x) = -a\pi \cdot \cos 2x - c\pi,$$

hence

$$Ku(x) - \pi u(x) = -(a+c)\cos 2x + \frac{3\pi}{4}c - \frac{\pi}{2}a.$$

This expression is equal to $-\frac{5\pi}{4}$, if and only if

$$c = -a \quad \text{and} \quad -\frac{5\pi}{4} = \frac{3\pi}{4}c - \frac{\pi}{2}a = -\frac{5\pi}{4}a,$$

thus $a = 1$ and $c = -1$, and the unique solution is given by

$$u(x) = \cos 2x - 1 = -2 \sin^2 x.$$

Second method. It is also possible to apply the standard method. A straightforward computation where we explicitly use the previously found eigenfunctions (these should then be normed), would demand a lot of energy, although one at different stages could apply one of the two variants above.

We shall show below how this might be carried out. First put

$$\varphi_1(x) = \sin x, \quad \varphi_2(x) = \cos 2x - 2, \quad \varphi_3(x) = \cos 2x + \frac{1}{4}.$$

Let $\{\varphi_n \mid n \geq 4\}$ denote an orthonormal basis of the null-space $\ker(K)$. Then a solution of the equation

$$Ku = \pi u - \frac{5\pi}{4},$$

has the structure

$$u = \sum_{n=1}^{+\infty} a_n \varphi_n, \quad \text{where } \sum_{n=4}^{+\infty} |a_n|^2 < +\infty.$$

Put $f(x) = -\frac{5\pi}{4}$. It follows from

$$(f, \varphi_n) = \left(-\frac{5\pi}{4}, \varphi_n\right) = 0 \quad \text{for } n \in \mathbb{N} \setminus \{2, 3\},$$

and

$$f(x) = -\frac{5\pi}{4} = c_2(\cos 2x - 2) + c_3 \left(\cos 2x + \frac{1}{4}\right) = (c_2 + c_3) \cos 2x - \left(2c_2 - \frac{1}{4}c_3\right),$$

that $c_3 = -c_2$, and

$$2c_2 - \frac{1}{4}c_3 = 2c_2 + \frac{1}{4}c_2 = \frac{9}{4}c_2 = \frac{5\pi}{4},$$

thus

$$c_2 = \frac{5\pi}{9} \quad \text{and} \quad c_3 = -\frac{5\pi}{9}.$$

Then we get by insertion into the equation

$$Ku - \pi u = -\frac{5\pi}{4}$$

that

$$\begin{aligned} Ku - \pi u &= \lambda_1 a_1 \varphi_1 + \lambda_2 a_2 \varphi_2 + \lambda_3 a_3 \varphi_3 - \sum_{n=1}^{+\infty} a_n \varphi_n \\ &= (2\pi - \pi)a_1 \varphi_1 + (2\pi - \pi)a_2 \varphi_2 - \left(\frac{\pi}{4} + \pi\right)a_3 \varphi_3 - \pi \sum_{n=4}^{+\infty} a_n \varphi_n \\ &= \pi a_1 \varphi_1 + \pi a_2 \varphi_2 - \frac{5\pi}{4} a_3 \varphi_3 - \pi \sum_{nm=4}^{+\infty} a_n \varphi_n \\ &= -\frac{5\pi}{4} = c_2 \varphi_2 + c_3 \varphi_3, \end{aligned}$$

and we derive that

$$a_1 = 0, \quad a_2 = \frac{1}{\pi} c_2 = \frac{5}{9}, \quad a_3 = -\frac{4}{5\pi} c_3 = \frac{4}{9}, \quad a_n = 0 \text{ for } n \geq 4,$$

hence

$$u(x) = \frac{5}{9}(\cos 2x - 2) + \frac{4}{9} \left(\cos 2x + \frac{1}{4}\right) = \cos 2x - 1 = -2 \sin^2 x.$$

Example 1.14 Let $k(x, t) = x + t + 2xt$ be the kernel for the Hilbert-Schmidt operator K on the Hilbert space $H = L^2([-1, 1])$.

Show that K is self adjoint and determine the range $K(H)$.

Find all non-zero eigenvalues and corresponding eigenfunctions for K , and determine $\sigma(K)$ as well as $\|K\|$.

Express Kf , $f \in H$, with the help of the Legendre polynomials (P_n) .

Let $f(x) = \cosh(1) \cosh(x) - \cosh(2x)$. Show that $(f, P_0) = (f, P_1) = 0$ and solve the equation

$$Ku(x) + u(x) = f(x).$$

1) It follows from

$$\overline{k(t, x)} = \overline{t + x + 2tx} = x + t + 2xt = k(x, t),$$

that the kernel is Hermitian, thus K is self adjoint. We conclude from

$$Kf(x) = \int_{-1}^1 (x + t + 2xt)f(t) dt = x \int_{-1}^1 (1 + 2t)f(t) dt + \int_{-1}^1 t f(t) dt,$$

that the range is $K(L^2([-1, 1])) = \text{span}\{1, x\}$.

2) The only possible eigenfunctions must be of the form $f(x) = ax + b$. We get by insertion the condition

$$\lambda f(x) = \lambda ax + \lambda b = Kf(x) = x \int_{-1}^1 (1 + 2t)(at + b) dt + \int_{-1}^1 t(at + b) dt,$$

hence

$$\lambda a = \int_{-1}^1 (1 + 2t)(at + b) dt = \int_{-1}^1 \{2at^2 + (a + 2b)t + b\} dt = \frac{4}{3}a + 2b$$

and

$$\lambda b = \int_{-1}^1 (at^2 + bt) dt = \frac{2a}{3}.$$

Hence,

$$\lambda^2 a = \frac{4}{3}a\lambda + 2\lambda b = \frac{4}{3}\lambda a + \frac{4}{3}a.$$

If $a = 0$, then $2b = \left(\lambda - \frac{4}{3}\right)a = 0$, which leads to nothing, so we may assume that $a \neq 0$, e.g. $a = 1$. Then

$$\lambda^2 - \frac{4}{3}\lambda - \frac{4}{3} = 0,$$

i.e.

$$\lambda = \frac{2}{3} \pm \sqrt{\frac{4}{9} + \frac{4}{3}} = \frac{2}{3} \pm \sqrt{\frac{16}{9}} = \frac{2}{3} \pm \frac{4}{3} = \begin{cases} 2, \\ -\frac{2}{3}. \end{cases}$$

If $\lambda_1 = 2$ and $a = 1$, then $b = \frac{1}{\lambda_1} \cdot \frac{2a}{3} = \frac{1}{3}$, and the corresponding eigenfunction is

$$\varphi_1(x) = x + \frac{1}{3}, \quad \lambda_1 = 2.$$

If $\lambda_2 = -\frac{2}{3}$ and $a = 1$, then $b = \frac{1}{\lambda_2} \cdot \frac{2a}{3} = -\frac{3}{2} \cdot \frac{2}{3} = -1$, and the corresponding eigenfunction is

$$\varphi_2(x) = x - 1, \quad \lambda_2 = -\frac{2}{3}.$$

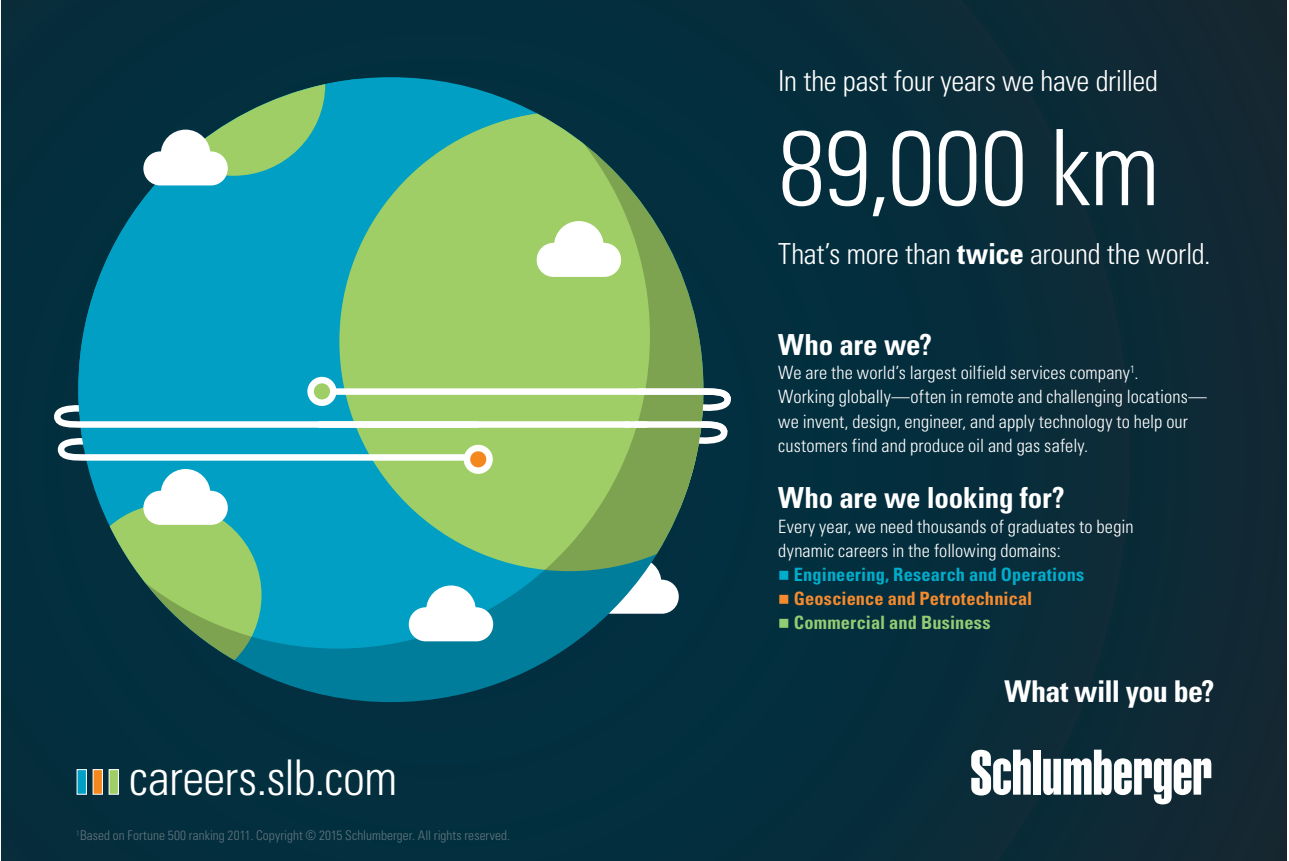
Since K is self adjoint and of Hilbert-Schmidt-type, $\|K\|$ is the absolute value of the eigenvalue of largest absolute value,

$$\|K\| = 2.$$

Finally,

$$\sigma(K) = \sigma_p(K) = \left\{ -\frac{2}{3}, 0, 2 \right\},$$

and every function, which is orthogonal on both φ_1 and φ_2 , i.e. on both 1 and x by a change of basis, must lie in the eigenspace corresponding to $\lambda = 0$.



In the past four years we have drilled

89,000 km

That's more than **twice** around the world.

Who are we?
We are the world's largest oilfield services company¹. Working globally—often in remote and challenging locations—we invent, design, engineer, and apply technology to help our customers find and produce oil and gas safely.

Who are we looking for?
Every year, we need thousands of graduates to begin dynamic careers in the following domains:

- Engineering, Research and Operations
- Geoscience and Petrotechnical
- Commercial and Business

What will you be?

careers.slb.com

Schlumberger

¹Based on Fortune 500 ranking 2011. Copyright © 2015 Schlumberger. All rights reserved.



3) It is well-known that the Legendre polynomials form an orthogonal system on $L^2([-1, 1])$. We have in particular,

$$P_0(t) = 1 \quad \text{and} \quad P_1(t) = t,$$

and since $\text{span}\{P_0, P_1\} = K(L^2([-1, 1]))$, we infer that

$$KP_n = 0 \quad \text{for every } n \geq 2.$$

It follows that if $f = \sum_{n=0}^{+\infty} a_n P_n$, then

$$\begin{aligned} Kf(x) &= K\left(\sum_{n=0}^{+\infty} a_n P_n\right)(x) = K\left(\sum_{n=0}^1 a_n P_n\right)(x) \\ &= K(a_0 + a_1 t)(x) = \int_{-1}^1 (a_0 + a_1 t)(x + t + 2xt) dt \\ &= \int_{-1}^1 \{a_0 x + a_0 t + 2a_0 x \cdot t + a_1 x \cdot t + a_1(1 + 2x)t^2\} dt \\ &= 2a_0 x + \frac{2}{3} a_1(1 + 2x) = \left(2a_0 + \frac{4}{3} a_1\right) x + \frac{2}{3} a_1 \\ &= \left(2a_0 + \frac{4}{3} a_1\right) P_1(x) + \frac{2}{3} a_1 P_0(x). \end{aligned}$$

4) Let $f(x) = \cosh 1 \cdot \cosh x - \cosh 2x$. Then

$$\begin{aligned} (f, P_0) &= \int_{-1}^1 \{\cosh 1 \cdot \cosh x - \cosh 2x\} dx = \cosh 1 \cdot [\sinh x]_{-1}^1 - \left[\frac{1}{2} \sinh 2x\right]_{-1}^1 \\ &= \cosh 1 \cdot 2 \sinh 1 - \frac{1}{2} \cdot 2 \sinh 2 = \sinh 2 - \sinh 2 = 0, \end{aligned}$$

and

$$(f, P_1) = \int_{-1}^1 \{\cosh 1 \cdot \cosh x - \cosh 2x\} \cdot x dx = 0,$$

because the integrand is an odd function, and because we integrate over a finite symmetric interval.

Finally, we shall solve the equation

$$Ku(x) + u(x) = \cosh 1 \cdot \cosh x - \cosh 2x.$$

If

$$u = \sum_{n=0}^{+\infty} a_n P_n \quad \text{and} \quad \cosh 1 \cdot \cosh x - \cosh 2x = \sum_{n=2}^{+\infty} b_n P_n,$$

then it follows from the above that

$$\begin{aligned} \frac{2}{3} a_1 P_0 + \left(2a_0 + \frac{4}{3} a_1\right) P_1 + a_0 P_0 + a_1 P_1 + \sum_{n=2}^{+\infty} a_n P_n \\ = \sum_{n=2}^{+\infty} b_n P_n = \cosh 1 \cdot \cosh x - \cosh 2x, \end{aligned}$$

and we conclude that $a_n = b_n$ for $n \geq 2$ and that

$$\begin{cases} a_0 + \frac{2}{3}a_1 = 0, \\ 2a_0 + \frac{1}{3}a_1 = 0, \end{cases} \quad \text{hence } a_0 = a_1 = 0,$$

and whence

$$u = \sum_{n=2}^{+\infty} a_n P_n = \sum_{n=2}^{+\infty} b_n P_n = \cosh 1 \cdot \cosh x - \cosh 2x.$$

American online LIGS University

is currently enrolling in the
Interactive Online **BBA, MBA, MSc,**
DBA and PhD programs:

- ▶ enroll **by September 30th, 2014** and
- ▶ **save up to 16%** on the tuition!
- ▶ pay in 10 installments / 2 years
- ▶ Interactive **Online education**
- ▶ visit www.ligsuniversity.com to
find out more!

Note: LIGS University is not accredited by any nationally recognized accrediting agency listed by the US Secretary of Education. More info [here](#).





Example 1.15 In $L^2([-\pi, \pi])$ we consider the orthonormal basis (e_n) , $n \in \mathbb{Z}$, where

$$e_n(t) = \frac{1}{\sqrt{2\pi}} e^{int}.$$

1. Let $\varphi : \mathbb{R} \rightarrow \mathbb{C}$ denote a continuous function with period 2π , and assume that $\varphi(-x) = \overline{\varphi(x)}$ for all $x \in \mathbb{R}$. Show that

$$Ku(x) = \int_{-\pi}^{\pi} \varphi(x-t) u(t) dt$$

defines a selfadjoint Hilbert-Schmidt operator on $L^2([-\pi, \pi])$.

2. Show that all e_n are eigenfunctions for K .

From now on we assume that φ is the periodic extension from $[-\pi, \pi]$ to \mathbb{R} of the function

$$\varphi(x) = 1 - \frac{|x|}{\pi}.$$

3. Calculate the spectrum of K .

4. Solve the equation

$$Ku = \frac{2}{\pi} u + f \quad \text{in } L^2([-\pi, \pi]),$$

where $f(x) = \sin^2(x) + \sin(x)$.

5. Solve the equation

$$Ku = \frac{4}{\pi} u + 1 \quad \text{in } L^2([-\pi, \pi]).$$

- 1) The kernel is

$$k(x, t) = \varphi(x-t), \quad x, t \in [-\pi, \pi],$$

where

$$\begin{aligned} \int_{-\pi}^{\pi} \int_{-\pi}^{\pi} |\varphi(x-t)|^2 dt dx &= \int_{-\pi}^{\pi} \left\{ \int_{-\pi-t}^{\pi-t} |\varphi(u)|^2 du \right\} dx = \int_{-\pi}^{\pi} \int_{-\pi}^{\pi} |\varphi(u)|^2 du dx \\ &= 2\pi \|\varphi\|_2^2 < +\infty, \end{aligned}$$

proving that K is a Hilbert-Schmidt operator.

ALTERNATIVELY, φ is continuous on a compact set, hence $|\varphi(x)| \leq c$ for $x \in [-\pi, \pi]$. Then apply the periodicity to get the estimate

$$\int_{-\pi}^{\pi} \int_{-\pi}^{\pi} |\varphi(x-t)|^2 dt dx \leq c^2 (2\pi)^2 = 4\pi^2 c^2 < +\infty. \quad \diamond$$

From $\varphi(-x) = \overline{\varphi(x)}$ follows that

$$\overline{k(t, x)} = \overline{\varphi(t-x)} = \varphi(x-t) = k(x, t),$$

which shows that the kernel is Hermitian, thus K is self adjoint.

2) By insertion of $e_n(x)$ follows by a change of variable,

$$\begin{aligned} Ke_n(x) &= \int_{-\pi}^{\pi} \varphi(x-t) e_n(t) dt = \int_{x-\pi}^{x+\pi} \varphi(u) e_n(x-u) du \\ &= \int_{x-\pi}^{x+\pi} \varphi(u) \cdot e^{-inu} du \cdot \frac{1}{\sqrt{2\pi}} e^{inx} = \int_{-\pi}^{\pi} \varphi(u) e^{-inu} du \cdot e_n(x), \end{aligned}$$

from which follows that every $e_n(x)$, $n \in \mathbb{Z}$, is an eigenfunction for K .

Conversely, if ψ is an eigenfunction, then $\psi = \sum c_n e_n$, hence ψ must lie in the subspace corresponding to the e_n , which have the same eigenvalue. This means that the eigenvalues are

$$\int_{-\pi}^{\pi} \varphi(u) e^{-inu} du, \quad n \in \mathbb{Z},$$

and it suffices only to look at the eigenfunctions $e_n(x)$, $n \in \mathbb{Z}$, in the following.

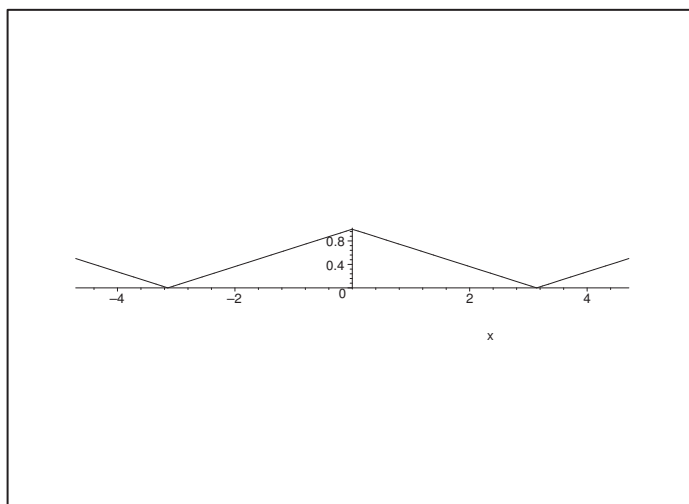


Figure 1: The graph of the function φ .

3) If $\varphi(x) = 1 - \frac{|x|}{\pi}$ for $x \in [-\pi, \pi]$, then we have in particular that $\varphi(-x) = \overline{\varphi(x)}$, and that φ is continuous – also after a periodic extension. Therefore, we are again in the situation above. If $n \neq 0$, then the eigenvalues are given by

$$\begin{aligned} \int_{-\pi}^{\pi} \left(1 - \frac{|x|}{\pi}\right) e^{-inx} dx &= - \int_{-\pi}^{\pi} \frac{|x|}{\pi} e^{-inx} dx = -\frac{2}{\pi} \int_0^{\pi} x \cos(nx) dx \\ &= 0 + \frac{2}{n\pi} \int_0^{\pi} \sin(nx) dx = \frac{2\{1 - (-1)^n\}}{\pi n^2}. \end{aligned}$$

For $n = 0$ we instead get by considering an area on the figure,

$$\int_{-\pi}^{\pi} \left(-\frac{|x|}{\pi}\right) dx = \pi.$$

ALTERNATIVELY,

$$\int_{-\pi}^{\pi} \left(a - \frac{|x|}{\pi} \right) dx = 2\pi - \frac{2}{\pi} \int_0^{\pi} x dx = 2\pi - \frac{2\pi^2}{2\pi} = \pi.$$

Summing up,

$$\lambda_0 = \pi, \quad \begin{cases} \lambda_{2n} = 0, & n \in \mathbb{Z} \setminus \{0\}, \\ \lambda_{2n+1} = \frac{4}{\pi(2n+1)^2}, & n \in \mathbb{Z}, \end{cases}$$

and we conclude that the spectrum is

$$\sigma(K) = \sigma_p(K) = \{0, \pi\} \cup \left\{ \frac{4}{\pi(2n+1)^2} \mid n \in \mathbb{N}_0 \right\}.$$

Notice that the eigenspace corresponding to each eigenvalue of the form $\frac{4}{\pi(2n+1)^2}$ is of dimension 2, while the eigenspace corresponding to $\lambda_0 = \pi$ is only of dimension 1.

4) Let

$$u = \sum c_n e_n = c_0 e_0 + \sum_{n \neq 0} c_{2n} e_{2n} + \sum_{n \in \mathbb{Z}} c_{2n+1} e_{2n+1}.$$

Then

$$\begin{aligned} f(x) &= \sin^2 x + \sin x = \frac{1 - \cos 2x}{2} + \sin x = \frac{1}{2} + \frac{e^{ix} - e^{-ix}}{2i} - \frac{e^{2ix} + e^{-2ix}}{4} \\ &= \frac{\sqrt{2\pi}}{2} e_0(x) + i \frac{\sqrt{2\pi}}{2} e_{-1}(x) - i \frac{\sqrt{2\pi}}{2} e_1(x) - \frac{\sqrt{2\pi}}{4} e_2(x) - \frac{\sqrt{2\pi}}{4} e_{-2}(x) \\ &= Ku - \frac{2}{\pi} u \\ &= \left(\pi - \frac{2}{\pi} \right) c_0 e_0(x) + \sum_{n \in \mathbb{Z} \setminus \{0\}} \left(-\frac{2}{\pi} \right) c_{2n} e_{2n}(x) + \sum_{n \in \mathbb{Z}} \left\{ \frac{4}{(2n+1)^2 \pi} - \frac{2}{\pi} \right\} c_{2n+1} e_{2n+1}(x). \end{aligned}$$

It follows from $\frac{2}{\pi} \notin \sigma_p(K) = \sigma(K)$ by identification that

$$c_0 = \frac{\sqrt{2\pi}}{2} \cdot \frac{1}{\pi - \frac{2}{\pi}} = \sqrt{2\pi} \cdot \frac{\pi}{2(\pi^2 - 2)},$$

and

$$c_{-1} = i \frac{\sqrt{2\pi}}{2} \cdot \frac{1}{\frac{4}{\pi} - \frac{2}{\pi}} = i \sqrt{2\pi} \cdot \frac{\pi}{4}, \quad c_1 = \overline{c_{-1}} = -i \sqrt{2\pi} \cdot \frac{\pi}{4},$$

and

$$c_{-2} = c_2 = -\frac{\sqrt{2\pi}}{4} \cdot \frac{1}{-\frac{2}{\pi}} = \sqrt{2\pi} \cdot \frac{\pi}{8}, \quad \text{and } c_n = 0 \quad \text{otherwise.}$$

This implies that

$$\begin{aligned} u(x) &= \frac{\pi}{2(\pi^2 - 2)} \sqrt{2\pi} e_0(x) + \frac{\pi}{2} \cdot \frac{\sqrt{2\pi}}{2i} \{e_1(x) - e_{-1}(x)\} + \frac{\pi}{4} \frac{\sqrt{2\pi}}{2} \{e_2(x) + e_{-2}(x)\} \\ &= \frac{\pi}{2(\pi^2 - 2)} + \frac{\pi}{2} \sin x + \frac{\pi}{4} \cos 2x. \end{aligned}$$

5) In this case, $\frac{4}{\pi}$ is an eigenvalue corresponding to the eigenvectors $e_1(x)$ and $e_{-1}(x)$. Since $1 = \sqrt{2\pi} e_0$ is orthogonal to e_1 and e_{-1} , we get

$$u = c_{-1}e_{-1} + c_1e_1 + c_0e_0,$$

where c_{-1} and c_1 are arbitrary constants, and

$$1 = K(c_0e_0) - \frac{4}{\pi} c_0e_0 = \left(\pi - \frac{4}{\pi}\right) c_0e_0 = \left(\pi - \frac{4}{\pi}\right) c_0 \cdot \frac{1}{\sqrt{2\pi}},$$

hence

$$c_0 = \frac{\sqrt{2\pi}}{\pi - \frac{4}{\pi}} = \frac{\pi\sqrt{2\pi}}{\pi^2 - 4},$$

.....Alcatel-Lucent 

www.alcatel-lucent.com/careers

What if you could build your future and create the future?

One generation's transformation is the next's status quo. In the near future, people may soon think it's strange that devices ever had to be "plugged in." To obtain that status, there needs to be "The Shift".




and we get the solutions

$$u(x) = \frac{\pi\sqrt{2\pi}}{\pi^2 - 4} + \tilde{c}_1 e^{ix} + \tilde{c}_{-1} e^{-ix},$$

where \tilde{c}_1 and $\tilde{c}_{-1} \in \mathbb{C}$ are arbitrary constants.

Example 1.16 Let H denote the Hilbert space $L^2([0, 2\pi])$ with the subspace $F = C([0, 2\pi])$, and let K denote the integral operator on H with the kernel

$$k(x, t) = \begin{cases} \frac{i}{2} \exp\left(\frac{i}{2}(x-t)\right), & \text{if } 0 \leq t < x \leq 2\pi, \\ 0 & \text{if } 0 \leq t = x \leq 2\pi, \\ -\frac{i}{2} \exp\left(\frac{i}{2}(x-t)\right), & \text{if } 0 \leq x < t \leq 2\pi. \end{cases}$$

- 1) Show that K is a self adjoint Hilbert-Schmidt operator.
- 2) Assume that F is equipped with the sup-norm. Show that $K : H \rightarrow F$ is continuous.
- 3) Now let S denote the restriction of K to F (considered as a subspace of H). Show that S is injective and that S^{-1} is given by

$$D(S^{-1}) = \{g \in C^1([0, 2\pi]) \mid g(0) = g(2\pi)\},$$

and

$$S^{-1}g = -ig' - \frac{1}{2}g \quad \text{for } g \in D(S^{-1}).$$

- 4) Find all normalized eigenfunctions and associated eigenvalues for S^{-1} . Show that all eigenvalues are simple and that the set of normalized eigenfunctions is an orthonormal system in H .
- 5) Show that the eigenfunctions for S^{-1} are also eigenfunctions for K and find the associated eigenvalues. Justify that all eigenfunctions for K are given this way, and write the kernel for K using the normalized eigenfunctions.
- 6) Let $f \in H$ be given by the Fourier expansion

$$f = \sum_{n=-\infty}^{\infty} c_n e^{inx}.$$

Expand Kf using the Fourier coefficients c_n instead of f .

- 1) The kernel $k(x, t)$ is bounded and continuous for $t \neq x$ in the compact set $[0, 2\pi]^2$, hence $k \in L^2([0, 2\pi]^2)$ with

$$\|k\|_2^2 = \int_0^{2\pi} \left\{ \int_0^{2\pi} |k(x, t)|^2 dt \right\} dx = \frac{1}{4} \cdot (2\pi)^2 = \pi^2,$$

i.e. $\|k\|_2 = \pi$. This shows that K is a Hilbert-Schmidt operator.

We see from

$$\begin{aligned} \overline{k(t,x)} &= \begin{cases} -\frac{i}{2} \exp\left(-\frac{i}{2}(t-x)\right), & \text{for } 0 \leq x < t \leq 2\pi, \\ 0 & \text{for } 0 \leq x = t \leq 2\pi, \\ \frac{i}{2} \exp\left(-\frac{i}{2}(t-x)\right), & \text{for } 0 \leq t < x \leq 2\pi, \end{cases} \\ &= \begin{cases} \frac{i}{2} \exp\left(\frac{i}{2}(x-t)\right), & \text{for } 0 \leq t < x \leq 2\pi, \\ 0 & \text{for } 0 \leq t = x \leq 2\pi, \\ -\frac{i}{2} \exp\left(\frac{i}{2}(x-t)\right), & \text{for } 0 \leq x < t \leq 2\pi, \end{cases} \\ &= k(x,t), \end{aligned}$$

that $k(x,t)$ is Hermitian,, thus K is a self adjoint Hilbert-Schmidt operator.

2) The operator K is described by

$$\begin{aligned} Kf(x) &= \int_0^{2\pi} k(x,t) f(t) dt = \frac{i}{2} \int_0^x \exp\left(\frac{i}{2}(x-t)\right) f(t) dt - \frac{i}{2} \int_x^{2\pi} \exp\left(\frac{i}{2}(x-t)\right) f(t) dt \\ &= \frac{i}{2} \exp\left(i\frac{x}{2}\right) \int_0^x \exp\left(-i\frac{t}{2}\right) f(t) dt - \frac{i}{2} \exp\left(i\frac{x}{2}\right) \int_x^{2\pi} \exp\left(-i\frac{t}{2}\right) f(t) dt \\ &= \frac{i}{2} \exp\left(i\frac{x}{2}\right) \left\{ \int_0^x \exp\left(-i\frac{t}{2}\right) f(t) dt + \int_{2\pi}^x \exp\left(-i\frac{t}{2}\right) f(t) dt \right\}. \end{aligned}$$

Applying the Cauchy-Schwarz inequality over $[x, x + \Delta x]$ we get

$$\left| \int_x^{x+\Delta x} \exp\left(-i\frac{t}{2}\right) f(t) dt \right| \leq \|f\|_2 \cdot \sqrt{\Delta x},$$

where obviously the latter factor in the expression for $Kf(x)$ is continuous. The former factor is also continuous, so $K : H \rightarrow F$ is a mapping of H into F .

Then we get the estimate

$$\begin{aligned} |Kf(x)| &\leq \frac{1}{2} \cdot 1 \cdot \left\{ \int_0^x 1 \cdot |f(t)| dt + \int_x^{2\pi} 1 \cdot |f(t)| dt \right\} \\ &\leq \frac{1}{2} \|f\|_2 \{ \sqrt{x} + \sqrt{2\pi - x} \} \leq \frac{1}{2} \|f\|_2 \cdot \{ \sqrt{\pi} + \sqrt{\pi} \} = \sqrt{\pi} \cdot \|f\|_2, \end{aligned}$$

because $\sqrt{x} + \sqrt{2\pi - x}$ has its maximum in the interval $[0, 2\pi]$ at $x = \pi$. Then

$$\|Kf\|_\infty \leq \sqrt{\pi} \cdot \|f\|_2, \quad \text{hence} \quad \|K\| \leq \sqrt{\pi},$$

and the linear operator $K : H \rightarrow F$ is continuous.

3) Assume that $f \in F$ with $Kf \equiv 0$. Then by (2),

$$\int_0^x \exp\left(-i \frac{t}{2}\right) f(t) dt + \int_{2\pi}^x \exp\left(-i \frac{t}{2}\right) f(t) dt = 0,$$

for all $x \in [0, 2\pi]$. Both integrands are continuous, and the sum of the integrals are C^1 and constant, hence by differentiation,

$$0 = \exp\left(-i \frac{x}{2}\right) f(x) + \exp\left(-i \frac{x}{2}\right) f(x) = 2 \exp\left(-i \frac{x}{2}\right) f(x),$$

and we get $f \equiv 0$, so $S = K|_F$ is injective.

It was mentioned above that $Kf \in C^1$, if $f \in C$. Furthermore,

$$Kf(0) = \frac{i}{2} \cdot 1 \left\{ 0 - \int_0^{2\pi} \exp\left(-i \frac{t}{2}\right) f(t) dt \right\} = -\frac{i}{2} \int_0^{2\pi} \exp\left(-i \frac{t}{2}\right) f(t) dt,$$

and

$$\begin{aligned} Kf(2\pi) &= \frac{i}{2} \exp\left(i \cdot \frac{2\pi}{2}\right) \left\{ \int_0^{2\pi} \exp\left(-i \frac{t}{2}\right) f(t) dt + 0 \right\} \\ &= -\frac{i}{2} \int_0^{2\pi} \exp\left(-i \frac{t}{2}\right) f(t) dt = Kf(0), \end{aligned}$$

so we infer that

$$D(S^{-1}) = KF \subseteq \{g \in C^1([0, 2\pi]) \mid g(0) = g(2\pi)\}.$$

If on the other hand $g \in C^1([0, 2\pi])$ satisfies $g(0) = g(2\pi)$, then we shall check if the equation

$$Kf(x) = \frac{i}{2} \exp\left(i \frac{x}{2}\right) \left\{ \int_0^x \exp\left(-i \frac{t}{2}\right) f(t) dt + \int_{2\pi}^x \exp\left(-i \frac{t}{2}\right) f(t) dt \right\} = g(x)$$

has a solution $f \in F$. This equation is equivalent to

$$(8) \quad \int_0^x \exp\left(-i \frac{t}{2}\right) f(t) dt + \int_{2\pi}^x \exp\left(-i \frac{t}{2}\right) f(t) dt = -2i \exp\left(-i \frac{x}{2}\right) g(x),$$

so we get by differentiation,

$$(9) \quad 2 \exp\left(-i \frac{x}{2}\right) f(x) = -2i \exp\left(-i \frac{x}{2}\right) \left\{ -\frac{i}{2} g(x) + g'(x) \right\},$$

where (9) is equivalent to that the candidate $f(x)$ must have the structure

$$f(x) = -\frac{1}{2} g(x) - i g'(x).$$

It is obvious that f given in this way is continuous, when $g \in C^1$. The proof will be concluded, if we can prove that the additional condition $g(0) = g(2\pi)$ combined with (9) implies (8). The trick is that we write

$$2 \exp\left(-i \frac{x}{2}\right) f(x) = \exp\left(-i \frac{x}{2}\right) f(x) + \exp\left(-i \frac{x}{2}\right) f(x),$$

where we integrate the former term on the right hand side from 0 to x , and the latter from 2π to x . This construction is guaranteed by the assumption $g(0) = g(2\pi)$.

ALTERNATIVELY one may compute explicitly,

$$Kf(x) = -i K(g')(x) - \frac{1}{2} K(g)(x),$$

and then convince oneself by some partial integration that the result is $g(x)$. \diamond

4) The equation $S^{-1}g(x) = \lambda g(x)$ for $g \in D(S^{-1})$ is rewritten as

$$-i g'(x) - \frac{1}{2} g(x) = \lambda g(x), \quad g(0) = g(2\pi), \quad g \in C^1([0, 2\pi]),$$

i.e.

$$g'(x) = i \left\{ \lambda + \frac{1}{2} \right\} g(x), \quad g(0) = g(2\pi).$$



Maastricht University

*Leading
in Learning!*

**Join the best at
the Maastricht University
School of Business and
Economics!**

Top master's programmes

- 33rd place Financial Times worldwide ranking: MSc International Business
- 1st place: MSc International Business
- 1st place: MSc Financial Economics
- 2nd place: MSc Management of Learning
- 2nd place: MSc Economics
- 2nd place: MSc Econometrics and Operations Research
- 2nd place: MSc Global Supply Chain Management and Change

Sources: Keuzegids Master ranking 2013; Elsevier 'Beste Studies' ranking 2012; Financial Times Global Masters in Management ranking 2012

**Maastricht
University is
the best specialist
university in the
Netherlands
(Elsevier)**

**Visit us and find out why we are the best!
Master's Open Day: 22 February 2014**

www.mastersopenday.nl



The complete solution without the boundary condition is

$$g(x) = c \cdot \exp\left(i\left(\lambda + \frac{1}{2}\right)x\right).$$

Choosing $c = 1$ and inserting into the boundary condition, we get

$$\exp\left(i\left(\lambda + \frac{1}{2}\right)0\right) = 1 = \exp\left(i\left(\lambda + \frac{1}{2}\right) \cdot 2\pi\right),$$

the solutions of which are $\lambda_n + \frac{1}{2} = n \in \mathbb{Z}$.

The eigenvalues are

$$\sigma_p(S^{-1}) = \left\{ \lambda_n = n - \frac{1}{2} \mid n \in \mathbb{Z} \right\},$$

with the corresponding normalized eigenfunctions

$$e_n(x) = \frac{1}{\sqrt{2\pi}} e^{in\pi}, \quad n \in \mathbb{Z}.$$

5) It follows from $S^{-1}e_n(x) = \lambda_n e_n(x)$ that

$$\lambda_n K e_n(x) = e_n(x), \quad \text{thus} \quad K e_n(x) = \frac{1}{\lambda_n} e_n(x),$$

and K has the same eigenfunctions as S^{-1} , and the corresponding eigenvalues are

$$\left\{ \frac{1}{\lambda_n} = \frac{1}{n - \frac{1}{2}} = \frac{2}{2n - 1} \mid n \in \mathbb{Z} \right\} \subseteq \sigma_p(K).$$

Using that K is a self adjoint Hilbert-Schmidt operator, we get that the spectrum is given by

$$\sigma(K) = \{0\} \cup \left\{ \frac{2}{2n - 1} \mid n \in \mathbb{Z} \right\},$$

where each $\frac{2}{2n - 1}$ is an eigenvalue. Now, K is injective according to (3), so 0 is not an eigenvalue, thus

$$\sigma_c(K) = \{0\} \quad \text{and} \quad \sigma_p(K) = \left\{ \frac{2}{2n - 1} \mid n \in \mathbb{Z} \right\}.$$

Finally,

$$k(x, t) = \sum_{n=-\infty}^{+\infty} \frac{1}{\lambda_n} e_n(x) \cdot \overline{e_n(t)} = \frac{1}{\pi} \sum_{n=-\infty}^{+\infty} \frac{1}{2n - 1} e^{in(x-t)}.$$

6) Let $f \in H$ be given by the Fourier expansion

$$f = \sum_{n=-\infty}^{+\infty} c_n e^{inx}.$$

Since e^{inx} is an eigenfunction for K corresponding to the eigenvalue $\frac{1}{\lambda_n} = \frac{2}{2n-1}$, it follows by a termwise application of K that

$$Kf = \sum_{n=-\infty}^{+\infty} c_n K(e^{inx}) = \sum_{n=-\infty}^{+\infty} \frac{2}{2n-1} c_n e^{inx}.$$



> Apply now

**REDEFINE YOUR FUTURE
AXA GLOBAL GRADUATE
PROGRAM 2015**

redefining / standards



agence edg. © Photonstop



2 Other types of integral operators

Example 2.1 We shall consider $H = L^2([0, 1])$ as a real Hilbert space, and define $T : H \rightarrow H$ by

$$Tf(x) = \int_0^x f(t) dt.$$

Show that

$$|Tf(x)| \leq \sqrt{x} \|f\|_2,$$

and use this to show that $\|T\| < 1$.

Show that

$$T^n f(x) = \int_0^x \frac{(x-t)^{n-1}}{(n-1)!} f(t) dt.$$

Show that $\log(I+T)$ is a well-defined operator of Volterra type, and find an explicit expression for the kernel of this operator, using only known functions, that is, find k such that

$$\log(I+T)f(x) = \int_0^x k(x,t) f(t) dt.$$

1) It follows from the Cauchy-Schwarz inequality that

$$\begin{aligned} |Tf(x)| &= \left| \int_0^x f(t) dt \right| = \left| \int_0^1 1_{[0,x]}(t) f(t) dt \right| \leq \|1_{[0,x]}\|_2 \|f\|_2 \\ &= \left(\int_0^1 \{1_{[0,x]}(t)\}^2 dt \right)^{\frac{1}{2}} \|f\|_2 = \left\{ \int_0^x dt \right\}^{\frac{1}{2}} \|f\|_2 = \sqrt{x} \cdot \|f\|_2. \end{aligned}$$

(There are more variants of this computation).

2) It follows from the estimate above that

$$\|Tf\|_2^2 = \int_0^1 |Tf(x)|^2 dx \leq \int_0^1 x \|f\|_2^2 dx = \left[\frac{x^2}{2} \right]_0^1 \|f\|_2^2 = \frac{1}{2} \|f\|_2^2,$$

and we conclude that

$$\|T\| \leq \frac{1}{\sqrt{2}} < 1.$$

3) The formula clearly holds for $n = 1$. Assume that for some $n \in \mathbb{N}$,

$$T^n f(x) = \int_0^x \frac{(x-t)^{n-1}}{(n-1)!} f(t) dt, \quad f \in L^2([0, 1]).$$

Interchanging the order of integration in the computation below we get

$$\begin{aligned} T^{n+1}f(x) &= T^n(Tf)(x) = \int_0^x \frac{(x-t)^{n-1}}{(n-1)!} Tf(t) dt = \int_0^x \frac{(x-t)^{n-1}}{(n-1)!} \int_0^t f(s) ds dt \\ &= \int_0^x \left\{ \int_s^x \frac{(x-t)^{n-1}}{(n-1)!} dt \right\} f(s) ds = \int_0^x \left[-\frac{(x-t)^n}{n!} \right]_{t=s}^{t=x} f(s) ds \\ &= \int_0^x \frac{(x-s)^n}{n!} f(s) ds, \end{aligned}$$

and it follows that the formula also holds, when n is replaced by $n + 1$. Then the claim follows by induction.

4) Now,

$$\varphi(\lambda) = \log(1 + \lambda) = \sum_{n=1}^{+\infty} (-1)^{n-1} \frac{1}{n} \lambda^n, \quad \text{for } |\lambda| < 1,$$

and $T \in B(L^2([0, 1]))$ with $\|T\| \leq \frac{1}{\sqrt{2}} < 1$, so the operator $\log(I + T)$ is indeed defined by

$$\varphi(T) = \log(I + T) = \sum_{n=1}^{+\infty} (-1)^{n-1} \frac{1}{n} T^n.$$

Each of the T^n is of Volterra type, and $\varphi(T)$ contains only T^n for $n \geq 1$, hence $\varphi(T)$ is also of Volterra type.

5) When we insert the expression for $T^n f$ from (3), we get by purely formal computations that

$$\log(I + T)f(x) = \sum_{n=1}^{+\infty} (-1)^{n-1} \frac{1}{n} \int_0^x \frac{(x-t)^{n-1}}{(n-1)!} f(t) dt = \sum_{n=1}^{+\infty} \int_0^x \frac{(t-x)^{n-1}}{n!} f(t) dt.$$

However, the series $\sum_{n=1}^{+\infty} \frac{(t-x)^{n-1}}{n!}$ is *uniformly* convergent for $0 \leq t \leq x \leq 1$. (Notice that we get the sum 1 for $t = x$). Therefore it is indeed legal to interchange summation and integration. The we get for $0 \leq t < x$ the sum

$$\sum_{n=1}^{+\infty} \frac{(t-x)^{n-1}}{n!} = \frac{1}{t-x} \left\{ \sum_{n=0}^{+\infty} \frac{(t-x)^n}{n!} - 1 \right\} = \frac{e^{t-x} - 1}{t-x} = e^{-x} \cdot \frac{e^x - e^t}{x-t}.$$

Note that we for $t \rightarrow x$ get the limit $e^{-x} \cdot e^x = 1$.

We get by interchanging summation and integration,

$$\log(I + T)f(x) = \int_0^x e^{-x} \cdot \frac{e^x - e^t}{x-t} f(t) dt,$$

so the kernel of the Volterra operator $\log(I + T)$ is given by

$$k(x, t) = \begin{cases} e^{-x} \cdot \frac{e^x - e^t}{x-t} & \text{for } 0 \leq t < x \leq 1, \\ 1 & \text{for } 0 \leq t = x \leq 1, \\ 0 & \text{otherwise.} \end{cases}$$

Example 2.2 In this example it is allowed to change the order of integrations without justification. Consider the operator

$$Af(x) = \frac{1}{\sqrt{\pi}} \int_0^x \frac{f(t)}{\sqrt{x-t}} dt, \quad x \in [0, 1],$$

whenever this expression gives sense.

- 1) Show that $Af \in L^\infty([0, 1])$ if $f \in L^p([0, 1])$, $p > 2$.
- 2) Find the operator $B = A^2$, that is find the kernel $k(x, t)$ such that

$$Bf(x) = A^2f(x) = \int_0^x k(x, t) f(t) dt$$

for $f \in L^p([0, 1])$, $p > 2$.

- 3) Show that $B : L^p([0, 1]) \rightarrow L^\infty([0, 1])$, $1 \leq p \leq \infty$ is bounded.
- 4) Solve the equation

$$(I - A)f(x) = 1$$

formally by a Neumann series, and express f as

$$f(x) = g(x) + Ah(x),$$

where g and h are known functions. (Here it is not possible to express $Ah(x)$ as a known function.) Insert and show that this formal solution is a solution.

Remark 2.1 First note that the kernel does *not* belong to $L^2([0, 1]^2)$. In fact, it follows from

$$k(x, t) = \begin{cases} \frac{1}{\sqrt{x-t}} & \text{for } 0 \leq t < x \leq 1, \\ 0 & \text{otherwise,} \end{cases}$$

that

$$\int_0^1 \int_0^1 |k(x, t)|^2 dt dx = \int_0^1 \left\{ \int_0^x \frac{dt}{x-t} \right\} dx = \int_0^1 [-\ln(x-t)]_{t=0}^x dx = +\infty,$$

so we cannot apply the theory of the Hilbert-Schmidt operators. Part of the example is to use other methods. \diamond

- 1) Given $f \in L^p([0, 1])$, where $p > 2$, thus $1 < q < 2$, where q is the conjugated number of p , i.e. $\frac{1}{p} + \frac{1}{q} = 1$. Then by the Hölder inequality

$$\begin{aligned} |Af(x)| &\leq \frac{1}{\sqrt{\pi}} \int_0^x \frac{|f(t)|}{\sqrt{x-t}} dt \leq \frac{1}{\sqrt{\pi}} \left\{ \int_0^x |f(t)|^p dt \right\}^{\frac{1}{p}} \left\{ \int_0^x \frac{dt}{(x-t)^{q/2}} \right\}^{\frac{1}{q}} \\ &\leq \frac{1}{\sqrt{\pi}} \|f\|_p \left\{ \frac{-1}{1-\frac{q}{2}} \left[(x-t)^{1-\frac{q}{2}} \right]_{t=0}^x \right\}^{\frac{1}{q}} = \frac{1}{\sqrt{\pi}} \|f\|_p \left\{ \frac{1}{1-\frac{q}{2}} x^{1-\frac{q}{2}} \right\}^{\frac{1}{q}} \\ &\leq \frac{1}{\sqrt{\pi}} \cdot \left\{ 1 - \frac{q}{2} \right\}^{-\frac{1}{q}} \|f\|_p, \end{aligned}$$

where we have used that $1 - \frac{q}{2} > 0$, because $p > 2$. This holds for all $x \in [0, 1]$, so

$$\|Af\|_\infty \leq \frac{1}{\sqrt{\pi}} \cdot \left\{1 - \frac{q}{2}\right\}^{-\frac{1}{q}} \|f\|_p,$$

and $Af \in L^\infty([0, 1])$ for $f \in L^p([0, 1])$, when $2 < p < +\infty$.

If instead $p = +\infty$, then we get the following estimate,


$$\begin{aligned} |Af(x)| &\leq \frac{1}{\sqrt{\pi}} \int_0^x \frac{|f(t)|}{\sqrt{x-t}} dt = \frac{1}{\sqrt{\pi}} \|f\|_\infty \int_0^x \frac{dt}{\sqrt{x-t}} \\ &= \frac{1}{\sqrt{\pi}} \|f\|_\infty \cdot \left[\frac{-1}{1-\frac{1}{2}} \sqrt{x-t} \right]_0^x = \frac{2}{\sqrt{\pi}} \sqrt{x} \cdot \|f\|_\infty \leq \frac{2}{\sqrt{\pi}} \|f\|_\infty, \end{aligned}$$

and we get in this case that

$$\|Af\|_\infty \leq \frac{2}{\sqrt{\pi}} \|f\|_\infty,$$

hence $Af \in L^\infty([0, 1])$ for $f \in L^\infty([0, 1])$.

- 2) Assume again that $f \in L^p([0, 1])$, where $p > 2$. Then $Af \in L^\infty([0, 1])$ according to (1). From $p_1 = \infty > 2$ follows by another application of (1) that $A^2f \in L^\infty([0, 1])$.



Empowering People. Improving Business.

BI Norwegian Business School is one of Europe's largest business schools welcoming more than 20,000 students. Our programmes provide a stimulating and multi-cultural learning environment with an international outlook ultimately providing students with professional skills to meet the increasing needs of businesses.

BI offers four different two-year, full-time Master of Science (MSc) programmes that are taught entirely in English and have been designed to provide professional skills to meet the increasing need of businesses. The MSc programmes provide a stimulating and multi-cultural learning environment to give you the best platform to launch into your career.

- MSc in Business
- MSc in Financial Economics
- MSc in Strategic Marketing Management
- MSc in Leadership and Organisational Psychology

www.bi.edu/master

BI NORWEGIAN BUSINESS SCHOOL

EFMD
EQUIS
ACCREDITED

Compute

$$Bf(x) = A^2 f(x) = \frac{1}{\sqrt{\pi}} \int_0^x \frac{1}{\sqrt{x-t}} Af(t) dt = \frac{1}{\sqrt{\pi}} \int_0^x \frac{1}{\sqrt{x-t}} \left\{ \frac{1}{\sqrt{\pi}} \int_0^t \frac{f(u)}{\sqrt{t-u}} du \right\} dt.$$

From $0 \leq u \leq t \leq x \leq 1$ we infer by an interchange of the integrals fâs follows by the change of variable $xs = t - u$ that

$$\begin{aligned} Bf(x) &= \frac{1}{\pi} \int_0^x \left\{ \int_u^x \frac{dt}{\sqrt{(x-t)(t-u)}} \right\} f(u) du = \frac{1}{\pi} \int_0^x \left\{ \int_0^{x-u} \frac{ds}{\sqrt{\{(x-u)-s\}s}} \right\} f(u) du \\ &= \frac{1}{\pi} \int_0^x \pi f(u) du = \int_0^x f(t) dt, \end{aligned}$$

where we have used that

$$\int_0^a \frac{ds}{\sqrt{(a-s)s}} = \pi \quad \text{for } a = x - u > 0.$$

Remark 2.2 We prove for completeness this formula. We get by the monotonous substitution $s = a \sin^2 \theta$, $\theta \in \left[0, \frac{\pi}{2}\right]$,

$$\begin{aligned} \int_0^a \frac{ds}{\sqrt{(a-s)s}} &= \int_0^{\frac{\pi}{2}} \frac{1 \cdot 2 \sin \theta \cos \theta}{\sqrt{(a - a \sin^2 \theta) \cdot a \sin^2 \theta}} d\theta = 2a \int_0^{\frac{\pi}{2}} \frac{\sin \theta \cos \theta}{\sqrt{a^2(1 - \sin^2 \theta) \sin^2 \theta}} d\theta \\ &= \frac{2a}{|a|} \int_0^{\frac{\pi}{2}} \frac{\cos \theta \sin \theta}{|\cos \theta \sin \theta|} d\theta = 2 \int_0^{\frac{\pi}{2}} d\theta = \pi. \quad \diamond \end{aligned}$$

The operator is therefore a well-known integral operator, and A corresponds to “integrating one half time from 0”. The kernel is explicitly given by

$$k(x, t) = \begin{cases} 1 & \text{for } 0 \leq t \leq x \leq 1, \\ 0 & \text{otherwise.} \end{cases}$$

3) This follows easily from the Hölder inequality,

$$|Bf(x)| \leq \int_0^x |f(t)| dt \leq \int_0^1 |f(t)| \cdot 1 dt \leq 1 \cdot \|f\|_p,$$

hence $\|Bf\|_\infty \leq \|f\|_p$, and $\|B\| \leq 1$.

4) The Neumann series is given by

$$(I - A)^{-1} = \sum_{n=0}^{+\infty} A^n,$$

so the formal solution is

$$\begin{aligned} f(x) &= \sum_{n=0}^{+\infty} A^n 1(x) = \sum_{n=0}^{+\infty} A^{2n} 1(x) + \sum_{n=0}^{+\infty} A^{2n+1} 1(x) \\ &= \sum_{n=0}^{+\infty} B^n 1(x) + A \sum_{n=0}^{+\infty} B^n 1(x) = g(x) + Ag(x), \end{aligned}$$

hence

$$\begin{aligned} h(x) = g(x) &= \sum_{n=0}^{+\infty} B^n 1(x) = 1 + \sum_{n=1}^{+\infty} B^n 1(x) = 1 + \sum_{n=1}^{+\infty} \int_0^x \frac{t^{n-1}}{(n-1)!} \cdot 1 dt \\ &= 1 + \sum_{n=1}^{+\infty} \frac{x^n}{n!} = e^x, \end{aligned}$$

and the formal solution is

$$f(x) = e^x + Ae^x.$$

Then we get by insertion

$$\begin{aligned} (I - A)f(f) &= f(x) - Af(f) = e^x + Ae^x - Ae^x - A^2e^x \\ &= e^x - Be^x = e^x - \int_0^x e^t dt = e^x - [e^t]_0^x = e^x - (e^x - 1) = 1, \end{aligned}$$

and we have proved that we have found a solution.

Need help with your dissertation?

Get in-depth feedback & advice from experts in your topic area. Find out what you can do to improve the quality of your dissertation!

Get Help Now



Go to www.helpmyassignment.co.uk for more info



ALTERNATIVELY (and more elegantly),

$$(I - A)(I + A) = (I + A)(I - A) = I - A^2 = I - B.$$

Since B is a Volterra operator, we have that $(I - B)^{-1} = \sum_{n=0}^{+\infty} B^n$ is bounded. Clearly, A and $B = A^2$ commutes, so

$$(I - A) \{(I + A)(I - B)^{-1}\} = \{(I + A)(I - B)^{-1}\} (I - A) = I,$$

proving that

$$(I - A)^{-1} = (I + A)(I - B)^{-1}.$$

Hence the equation $(I - A)f = 1$ is equivalent to

$$f(x) = (I - A)^{-1}A(x) = (I + A) \sum_{n=0}^{+\infty} B^n 1(x) = (I + A)e^x = e^x + Ae^x,$$

where we have applied the computation above.

Example 2.3 Let $H = L^2([0, 1])$ and consider the integral operator

$$Bf(x) = \int_0^x f(t) dt, \quad \text{for } f \in H.$$

1) Show that

$$k(x, t) = \min\{x, t\}, \quad 0 \leq x, t \leq 1,$$

is the kernel for the self adjoint Hilbert-Schmidt operator $K = BB^*$.

2) Let φ be an eigenfunction for K associated with a non-zero eigenvalue λ . Justify that φ can be taken as a C^∞ -function.

Next, show that φ must satisfy the equation

$$\lambda \varphi''(x) = -\varphi(x),$$

and use this to find all non-zero eigenvalues for K and all the associated eigenfunctions.

3) Assuming the $\|BB^*\| = \|B^*\|^2$, show that $\|K\| = \|B\|^2$, and find both $\|K\|$ and $\|B\|$.

1) The operator B has the kernel

$$b(x, t) = \begin{cases} 1 & \text{for } 0 \leq t \leq x \leq 1, \\ 0 & \text{otherwise,} \end{cases}$$

so

$$b^*(x, t) = \overline{b(t, x)} = b(t, x) = \begin{cases} 1 & \text{for } 0 \leq x \leq t \leq 1, \\ 0 & \text{otherwise.} \end{cases}$$

Then the kernel $k(x, t)$ for $K = BB^*$ is given by

$$\begin{aligned} k(x, t) &= \int_0^1 b(x, s)b^*(s, t) ds = \int_0^1 b(x, s)b(t, s) ds \\ &= \int_0^1 b(\min\{x, t\}, s) ds = \min\{x, t\}, \quad x, t \in [0, 1]. \end{aligned}$$

- 2) Since $k(x, t)$ is continuous, we can choose the eigenfunctions continuous. Hence, if $\varphi(x)$ is an eigenfunction corresponding to an eigenvalue $\lambda \neq 0$, then

$$(10) \quad \lambda \varphi(x) = \int_0^1 k(x, t) \varphi(t) dt = \int_0^x t \varphi(t) dt + x \int_x^1 \varphi(t) dt.$$

If φ is continuous, then the right hand side of (10) is differentiable. If φ is of class C^n , then the right hand side of (10) is of class C^{n+1} , hence φ is also of class C^{n+1} . Then the claim follows by induction, hence $\varphi \in C^\infty$.

When we differentiate (10), we get

$$\lambda \varphi'(x) = x \varphi(x) + \int_x^1 \varphi(t) dt - x \varphi(x) = \int_x^1 \varphi(t) dt,$$

hence by another differentiation,

$$(11) \quad \lambda \varphi''(x) = -\varphi(x),$$

and the claim is proved.

- 3) Let $\alpha \in \mathbb{C} \setminus \{0\}$ satisfy the condition $\alpha^2 = \frac{1}{\lambda}$. Then the equation (11) has the complete solution

$$(12) \quad \varphi(x) = C_1 e^{i\alpha x} + C_2 e^{-i\alpha x}.$$

When (12) is put into (10), and we apply that $\frac{1}{\alpha^2} = \lambda$, then

$$\begin{aligned} \lambda \varphi(x) &= \lambda \{C_1 e^{i\alpha x} + C_2 e^{-i\alpha x}\} \\ &= \int_0^x t \{C_1 e^{i\alpha t} + C_2 e^{-i\alpha t}\} dt + x \int_x^1 \{C_1 e^{i\alpha t} + C_2 e^{-i\alpha t}\} dt \\ &= \left[t \left\{ \frac{C_1}{i\alpha} e^{i\alpha t} - \frac{C_2}{i\alpha} e^{-i\alpha t} \right\} \right]_0^x - \int_0^x \left\{ \frac{C_1}{i\alpha} e^{i\alpha t} - \frac{C_2}{i\alpha} e^{-i\alpha t} \right\} dt \\ &\quad + x \left[\frac{C_1}{i\alpha} e^{i\alpha t} - \frac{C_2}{i\alpha} e^{-i\alpha t} \right]_x^1 \\ &= x \left\{ \frac{C_1}{i\alpha} e^{i\alpha x} - \frac{C_2}{i\alpha} e^{-i\alpha x} \right\} - \left[\frac{C_1}{i^2 \alpha^2} e^{i\alpha t} + \frac{C_2}{i^2 \alpha^2} e^{-i\alpha t} \right]_0^x \\ &\quad + x \left\{ \frac{C_1}{i\alpha} e^{i\alpha} - \frac{C_2}{i\alpha} e^{-i\alpha} \right\} - x \left\{ \frac{C_1}{i\alpha} e^{i\alpha x} - \frac{C_2}{i\alpha} e^{-i\alpha x} \right\} \\ &= \frac{1}{\alpha^2} \{C_1 e^{i\alpha x} + C_2 e^{-i\alpha x}\} - \frac{1}{\alpha^2} \{C_1 + C_2\} + \frac{x}{i\alpha} \{C_1 e^{i\alpha} - C_2 e^{-i\alpha}\} \\ &= \lambda \varphi(x) - \lambda \{C_1 + C_2\} + \frac{x}{i\alpha} \{C_1 e^{i\alpha} - C_2 e^{-i\alpha}\}. \end{aligned}$$

This equation holds for every x , and $\lambda \neq 0$ and $\alpha \neq 0$, so we conclude that

$$C_1 + C_2 = 0 \quad \text{and} \quad C_1 e^{i\alpha} - C_2 e^{-i\alpha} = 0,$$

hence $C_2 = -C_1$, and $C_1 \{e^{i\alpha} + e^{-i\alpha}\} = 2C_1 \cos \alpha = 0$, thus

$$\alpha = \frac{\pi}{2} + n\pi, \quad n \in \mathbb{Z}.$$

It follows from

$$\varphi(x) = C_1 e^{i\alpha x} + C_2 e^{-i\alpha x} = C_1 \{e^{i\alpha x} - e^{-i\alpha x}\} = 2i C_1 \sin \alpha x,$$

that the eigenfunctions for K corresponding to a $\lambda \in \sigma_p(K) \setminus \{0\}$ are some constant times

$$\varphi_n(x) = \sin \left(\left(n - \frac{1}{2} \right) \pi x \right), \quad n \in \mathbb{N},$$

corresponding to the eigenvalue

$$\lambda_n = \frac{1}{\alpha_n^2} = \frac{4}{\pi^2} \cdot \frac{1}{(2n+1)^2}, \quad n \in \mathbb{N}.$$

4) Now, $\|K\|$ is the absolute value of the numerically largest eigenvalue $|\lambda_1|$, so

$$\|K\| = \|BB^*\| = \lambda_1 = \frac{4}{\pi^2} \cdot \frac{1}{(2-1)^2} = \left(\frac{2}{\pi} \right)^2.$$

On the other hand, BB^* is self adjoint, hence

$$\begin{aligned} \|BB^*\| &= \sup\{|(BB^* f, f)| \mid f \in L^2([0, 1]), \|f\|_2 = 1\} \\ &= \sup\{|(B^* f, B^* f)| \mid f \in L^2([0, 1]), \|f\|_2 = 1\} \\ &= \sup\{\|B^* f\|^2 \mid f \in L^2([0, 1]), \|f\|_2 = 1\} = \|B^*\|^2. \end{aligned}$$

Brain power

By 2020, wind could provide one-tenth of our planet's electricity needs. Already today, SKF's innovative know-how is crucial to running a large proportion of the world's wind turbines.

Up to 25 % of the generating costs relate to maintenance. These can be reduced dramatically thanks to our systems for on-line condition monitoring and automatic lubrication. We help make it more economical to create cleaner, cheaper energy out of thin air.

By sharing our experience, expertise, and creativity, industries can boost performance beyond expectations.

Therefore we need the best employees who can meet this challenge!

The Power of Knowledge Engineering

Plug into The Power of Knowledge Engineering.
Visit us at www.skf.com/knowledge

SKF

Finally, $B \in B(H)$, hence also $B^* \in B(H)$ with $\|B^*\| = \|B\|$, and whence

$$\|K\| = \|BB^*\| = \|B^*\|^2 = \|B\|^2 = \left(\frac{2}{\pi}\right)^2.$$

Then

$$\|B\| = \frac{2}{\pi},$$

where

$$Bf(x) = \int_0^x f(t) dt, \quad f \in L^2([0, 1]).$$

Example 2.4 Let $H = L^2([0, 1])$ and consider the operator K with domain $D(K) = C([0, 1])$ given by

$$Kf(x) = x \int_0^x f(t) dt + \int_x^1 t f(t) dt, \quad f \in D(K).$$

1) Show that $K : D(K) \rightarrow C^2([0, 1])$, and that

$$(Kf)'(0) = 0 \quad \text{and} \quad (Kf)'(1) = (Kf)(1).$$

2) Show that K is injective and that K^{-1} has the domain

$$D(K^{-1}) = \{u \in C^2([0, 1]) \mid u'(0) = 0, u(1) = u'(1)\},$$

and the action $K^{-1}u = u''$.

3) Show that K is an integral operator with continuous and symmetric kernel and find this kernel.

4) Let φ and ψ denote eigenfunctions for K associated to the same eigenvalue λ . Define the function f by

$$f(x) = \psi(0)\varphi(x) - \varphi(0)\psi(x),$$

and use the existence and uniqueness theorem for ordinary differential equations to argue that $f = 0$.

Next show that all eigenspaces for K are of dimension one.

5) Let $\sigma_p(K) = (\lambda_n)$ denote the sequence of eigenvalues for K . Find

$$\sum_{n=1}^{\infty} \lambda_n^2.$$

6) Let λ be a positive eigenvalue and let $\mu = \frac{1}{\sqrt{\lambda}}$. Express the associated eigenfunction with μ as a transcendent equation for μ .

Use a graph argument to show that K has at most one positive eigenvalue.

1) If $f \in C([0, 1])$, then we get immediately that Kf is of class $C^1([0, 1])$ and

$$(Kf)'(x) = \int_0^x f(t) dt + x f(x) - x f(x) = \int_0^x f(t) dt.$$

This shows that we even have $(Kf)' \in C^1([0, 1])$, hence $Kf \in C^2([0, 1])$, and

$$(13) \quad (Kf)''(x) = f(x).$$

Furthermore,

$$(Kf)'(0) = \int_0^0 f(t) dt = 0,$$

and

$$(Kf)(1) = 1 \cdot \int_0^1 f(t) dt + \int_1^1 t f(t) dt = \int_0^1 f(t) dt = (Kf)'(1).$$

2) Now, K is linear, hence K is injective, If $Kf(x) \equiv 0$ implies that $f = 0$. This follows from (13) in (1), because

$$f(x) = (Kf)''(x) = 0.$$

Assume that $u \in C^2([0, 1])$ satisfies $u'(0) = 0$ and $u(1) = u'(1)$. We shall prove that there is an $f \in C([0, 1])$, for which $u = Kf$. According to (13) the only possibility is $f = u''$, which we now check. Using that $u'' \in C([0, 1])$, we get

$$\begin{aligned} Ku''(x) &= x \int_0^x u''(t) dt + \int_x^1 t u''(t) dt = x \{u'(x) - u'(0)\} + [t u'(t)]_x^1 - \int_x^1 1 \cdot u'(t) dt \\ &= x u'(x) + u'(1) - x u'(x) - [u(t)]_x^1 = u'(1) - u(1) + u(x) = u(x), \end{aligned}$$

and the claim is proved.

3) We get from the expression for Kf that

$$Kf(x) = \int_0^1 k(x, t) f(t) dt = \int_0^x f(t) dt + \int_x^1 t f(t) dt = \int_0^1 \max\{x, t\} f(t) dt,$$

thus

$$k(x, t) = \max\{x, t\} \quad \text{for } x, t \in [0, 1],$$

and $k(x, t)$ is clearly continuous in $[0, 1]^2$, hence of class $L^2([0, 1]^2)$.

We note that $k(x, t) = \overline{k(t, x)}$, hence the kernel is Hermitian and K is a self adjoint Hilbert-Schmidt operator.

4) This is trivial. We know that K is injective, so $0 \notin \sigma_p(K)$, and if $\lambda \in \sigma_p(K)$, $\lambda \neq 0$, and $K\varphi = \lambda\varphi$, it follows by an application of K^{-1} that

$$\varphi = \lambda K^{-1}\varphi, \quad \text{i.e.} \quad K^{-1}\varphi = \frac{1}{\lambda}\varphi.$$

5) Assume that φ and ψ are eigenvectors for K with the same eigenvalue λ . Then

$$f(x) = \psi(0)\varphi(x) - \varphi(0)\psi(x)$$

is also an eigenfunction corresponding to λ , hence f is according to (4) an eigenvector corresponding to the operator $K^{-1} = \frac{d^2}{dx^2}$ with the eigenvalue $\frac{1}{\lambda}$, so

$$f''(x) = \frac{1}{\lambda} f(x).$$

Now, $(K\varphi)'(0) = 0 = \lambda\varphi'(0)$, and analogously for ψ , so we conclude from (1) that

$$f(0) = \psi(0)\varphi(0) - \varphi(0)\psi(0) = 0$$

and

$$f'(0) = \psi(0)\varphi'(0) - \varphi(0)\psi'(0) = 0.$$

It follows from the existence and uniqueness theorem for linear second order differential equations that

$$(14) \quad \frac{d^2 f}{dx^2} - \frac{1}{\lambda} f(x) = 0, \quad f(0) = 0, \quad f'(0) = 0,$$

does only have the solution $f(x) \equiv 0$, hence

$$(15) \quad \psi(0)\varphi(x) = \varphi(0)\psi(x).$$

Then assume that $\varphi(0) = 0$ for every eigenfunction. Then also $\varphi'(0) = 0$, cf. the above, so φ is a solution of (14), and $\varphi \equiv 0$. This means that φ is not an eigenfunction, contradicting the assumption. Therefore, we conclude that $\varphi(0) \neq 0$ for every eigenfunction. Then it follows from (15) that all eigenfunctions of the same eigenvalue are mutually proportional, hence every eigenspace for K has dimension 1.

6) When we use that K is self adjoint and of Hilbert-Schmidt type, cf. (3), we get that all eigenvalues are real, and

$$\sum_{n=1}^{+\infty} \lambda_n^2 = \|k\|_2^2,$$

where we have used (5) that every eigenspace has dimension 1. Then

$$\begin{aligned} \sum_{n=1}^{+\infty} \lambda_n^2 &= \|k\|_2^2 = \int_0^1 \int_0^1 \max\{x, t\}^2 dt dx = \int_0^1 \left\{ \int_0^x x^2 dt + \int_x^1 t^2 dt \right\} dt \\ &= \int_0^1 \left\{ x^3 + \left[\frac{t^3}{3} \right]_x^1 \right\} dx = \int_0^1 \left\{ x^3 + \frac{1}{3} - \frac{x^3}{3} \right\} dx = \frac{1}{3} \int_0^1 (2x^3 + 1) dx \\ &= \frac{1}{3} \left[\frac{x^4}{2} + x \right]_0^1 = \frac{1}{3} \left\{ \frac{1}{2} + 1 \right\} = \frac{1}{2}. \end{aligned}$$

7) It follows from (4) that if $\lambda > 0$ and $\mu = \frac{1}{\sqrt{\lambda}}$, then

$$\varphi''(x) = \frac{1}{\lambda} \varphi(x) = \mu^2 \varphi(x),$$

the complete solution of which is

$$\varphi(x) = C_1 e^{\mu x} + C_2 e^{-\mu x}.$$

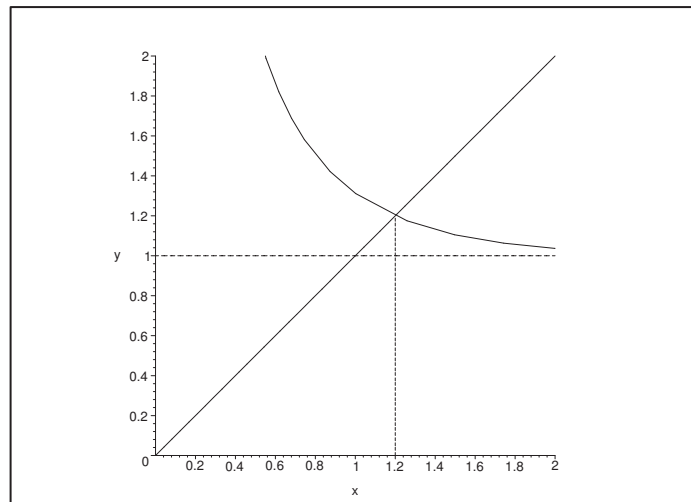


Figure 2: The graphs of $x = \mu$ and $x = \coth \mu$ intersect at $\mu \approx 1.199678640$.

What do you want to do?

No matter what you want out of your future career, an employer with a broad range of operations in a load of countries will always be the ticket. Working within the Volvo Group means more than 100,000 friends and colleagues in more than 185 countries all over the world. We offer graduates great career opportunities – check out the Career section at our web site www.volvogroup.com. We look forward to getting to know you!

VOLVO
 AB Volvo (publ)
www.volvogroup.com

VOLVO TRUCKS | RENAULT TRUCKS | MACK TRUCKS | VOLVO BUSES | VOLVO CONSTRUCTION EQUIPMENT | VOLVO PENTA | VOLVO AERO | VOLVO IT
 VOLVO FINANCIAL SERVICES | VOLVO 3P | VOLVO POWERTRAIN | VOLVO PARTS | VOLVO TECHNOLOGY | VOLVO LOGISTICS | BUSINESS AREA ASIA



We shall find the values of C_1 , C_2 and μ , for which $\varphi \in D(K^{-1})$. We compute

$$\varphi'(x) = \mu \{C_1 e^{\mu x} - C_2 e^{-\mu x}\},$$

and get the conditions (because $\mu > 0$)

$$\varphi'(0) = \mu \{C_1 - C_2\} = 0, \quad \text{i.e. } C_1 = C_2 = C,$$

and

$$\varphi(1) = C \{e^\mu + e^{-\mu}\} = C\mu \{e^\mu - e^{-\mu}\} = \varphi'(1),$$

so μ is a solution of the equation

$$\cosh \mu = \mu \sinh \mu,$$

which we write as

$$\coth \mu = \mu.$$

Considering the graphs we see that this equation has only one solution $\mu > 0$.

Remark 2.3 Using the iteration

$$\mu_{n+1} = \frac{1}{\tan \mu_n}$$

we get on a pocket calculator that

$$\mu \approx 1.199\,678\,640.$$

Note that

$$\lambda_1^2 = \frac{1}{\mu^4} \approx 0.482\,770\,022 < 0,5,$$

so

$$\sum_{n=2}^{+\infty} \lambda_n^2 = 0.017\,229\,978 \ll \lambda_1^2.$$

The norm of K is approximately

$$\|K\| = \lambda_1 \approx 0.694\,82.$$

We have for any other eigenvalue $\lambda \in \mathbb{R}$ that $\lambda < 0$, so $\mu = \frac{1}{\sqrt{\lambda}}$ is purely imaginary. \diamond

Example 2.5 Let $K \in B(H)$, where $H = L^2([0, 1])$, be given by

$$Kf(x) = \int_{1-x}^1 f(t) dt.$$

- 1) Show that K is actually bounded.
- 2) Show that the kernel $k(x, t)$ for K is Hermitian, and calculate

$$\|k\|^2 = \int_0^1 \int_0^1 |k(x, t)|^2 dt dx.$$

- 3) Show that the kernel $k_2(x, t)$ for K^2 is $\min\{x, t\}$.
- 4) Show that an eigenfunction for K is an eigenfunction for K^2 .
Now, let f denote an eigenfunction for K associated with the eigenvalue λ . Calculate $(K^2 f)''$, justify that it belongs to H and show that f is a solution to the equation

$$\lambda^2 f'' + f = 0.$$

- 5) Find all eigenvalues and associated eigenfunctions for K .
- 6) Determine $\|K\|$.

- 1) Apply the Cauchy-Schwarz inequality in $L^2([1-x, 1])$ for $f \in H$. This gives

$$\|Kf\|_2^2 = \int_0^1 \left| \int_{1-x}^1 1 \cdot f(t) dt \right|^2 dx \leq \int_0^1 \{\sqrt{x} \cdot \|f\|_2\}^2 dx = \|f\|_2^2 \int_0^1 x dx = \frac{1}{2} \|f\|_2^2,$$

and we conclude that $\|K\| \leq \frac{1}{\sqrt{2}}$, thus K is bounded.

- 2) It follows from

$$Kf(x) = \int_0^1 k(x, t) f(t) dt = \int_{1-x}^1 f(t) dt = \int_0^1 1_{[1-x, 1]}(t) f(t) dt,$$

that

$$k(x, t) = 1_{[1-x, 1]}(t) = \begin{cases} 1 & \text{for } 1-x \leq t \leq 1, \quad x \in [0, 1], \\ 0 & \text{otherwise.} \end{cases}$$

Hence, $k(x, t) = 1$, if and only if $x + t \geq 1$, $x, t \in [0, 1]$, and 0 otherwise, i.e. if and only if

$$(x, t) \in B = \{(x, t) \in [0, 1]^2 \mid x + t \geq 1\},$$

so we get (cf. the figure)

$$k(x, t) = 1_B(x, t) = \overline{1_B(t, x)} = \overline{k(t, x)},$$

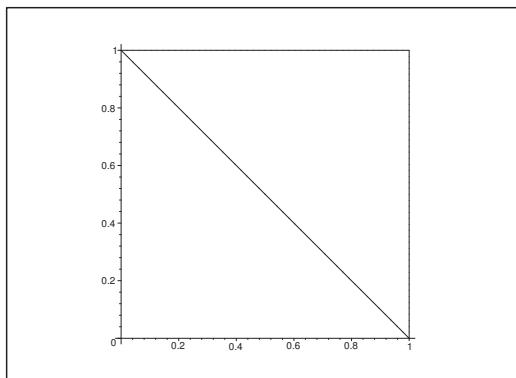


Figure 3: The domain B , where $k(x, t) = 1$, is the upper triangle.

which shows that the kernel is Hermitian.

Then we get

$$\|k\|_2^2 = \int_0^1 \int_0^1 |k(x, t)|^2 dt dx = \int_0^1 \int_0^1 k(x, t) dt dx = \text{area}(B) = \frac{1}{2},$$

possibly in the variant

$$\|k\|_2^2 = \int_0^1 \int_0^1 k(x, t) dt dx = \int_0^1 (K1)(x) dx = \int_0^1 \left\{ \int_{1-x}^1 dt \right\} dx = \int_0^1 x dx = \frac{1}{2}.$$

3) The kernel for K^2 is given by

$$k_2(x, t) = \int_0^1 k(x, s)k(s, t) ds,$$

where the integrand is $\neq 0$, if and only if

$$1 - x \leq s \leq 1 \quad \text{and} \quad 1 - s \leq t \leq 1.$$

This provides us with the bounds

$$1 - x \leq s \leq 1 \quad \text{and} \quad 1 - t \leq s \leq 1,$$

hence $s \leq 1$ and

$$s \geq \max\{1 - x, 1 - t\} = 1 - \min\{x, t\}.$$

Then by insertion

$$\begin{aligned} k_2(x, t) &= \int_0^1 k(x, s)k(s, t) ds = \int_{1-\min\{x, t\}}^1 k(x, s)k(s, t) ds \\ &= \int_{1-\min\{x, t\}}^1 ds = \min\{x, t\}, \end{aligned}$$

i.e.

$$k_2(x, t) = \min\{x, t\}, \quad (x, t) \in [0, 1]^2.$$

4) If $Kf = \lambda f$, then of course

$$K^2 f = \lambda Kf = \lambda^2 f,$$

so if f is an eigenfunction for K corresponding to the eigenvalue λ , then f is an eigenfunction for K^2 corresponding to the eigenvalue λ^2 .

We get, the kernel for K^2 being k_2 ,

$$K^2 f(x) = \int_0^1 \min\{x, t\} f(t) dt = \int_0^x t f(t) dt + x \int_x^1 f(t) dt.$$

Obviously, $K^2 f$ is differentiable in the weak sense, and we get

$$(K^2 f)'(x) = x f(x) + \int_x^1 f(t) dt - x f(x) = \int_x^1 f(t) dt.$$

This shows that $(K^2 f)'$ also is weakly differentiable, so

$$(K^2 f)''(x) = -f(x).$$

gaiteye[®]
Challenge the way we run

**EXPERIENCE THE POWER OF
FULL ENGAGEMENT...**

.....

**RUN FASTER.
RUN LONGER..
RUN EASIER...**

**READ MORE & PRE-ORDER TODAY
WWW.GAITEYE.COM**

If f is an eigenvalue for K corresponding to the eigenvalue λ , i.e. $Kf = \lambda f$, then it follows from the above that

$$(K^2 f)(x) = \lambda^2 f(x)$$

and f is differentiable. It follows by induction that f is infinitely often differentiable, so we get from the above that

$$\lambda^2 f''(x) = (K^2 f)''(x) = -f(x),$$

hence by a rearrangement,

$$(16) \quad \lambda^2 f''(x) + f(x) = 0.$$

Therefore, if f is an eigenfunction for K with eigenvalue λ , then f must also fulfil (16). In particular, $\lambda \neq 0$, if f is an eigenfunction. It is well-known that the solutions of (16) are

$$f(x) = c_1 \exp\left(\frac{i}{\lambda} x\right) + c_2 \exp\left(-\frac{i}{\lambda} x\right).$$

From $K^2 f(0) = 0 = \lambda^2 f(0)$ follows that $f(0) = 0$, so we conclude that $c_1 + c_2 = 0$. Putting $c_1 = \frac{c}{2i}$, we get $c_2 = -\frac{c}{2i}$, and the only possibility of an eigenfunction is

$$f(x) = \frac{c}{2i} \left\{ \exp\left(\frac{i}{\lambda} x\right) - \exp\left(-\frac{i}{\lambda} x\right) \right\} = c \cdot \sin\left(\frac{x}{\lambda}\right).$$

5) It remains to find the possible eigenvalues λ .

Put $c = 1$ and $\alpha = \frac{1}{\lambda}$. It follows from $Kf(x) = \lambda f(x)$ that

$$f(x) = \sin\left(\frac{x}{\lambda}\right) = \sin(\alpha x) = \frac{1}{\lambda} Kf(x) = \alpha \cdot K \sin(\alpha \cdot)(x),$$

hence by insertion into the definition of K ,

$$\begin{aligned} \sin(\alpha x) &= \alpha \int_{1-x}^1 \sin(\alpha t) dt = [-\cos(\alpha t)]_{1-x}^1 = \cos(\alpha(1-x)) - \cos \alpha \\ &= \cos \alpha \cdot \cos \alpha x + \sin \alpha \cdot \sin \alpha x - \cos \alpha, \end{aligned}$$

so

$$(1 - \sin \alpha) \sin \alpha x = \cos \alpha \cdot (\cos \alpha x - 1).$$

This equation is fulfilled for all x , if either $\alpha = 0$, which is not possible because $\alpha = \frac{1}{\lambda}$, or if $\cos \alpha = 0$ and $\sin \alpha = 1$, hence

$$\alpha_p = \frac{\pi}{2} + 2p\pi, \quad p \in \mathbb{Z},$$

and we get

$$\lambda_p = \frac{1}{\alpha_p} = \frac{1}{\frac{\pi}{2} + 2p\pi} = \frac{1}{\pi} \cdot \frac{1}{4p+1}, \quad p \in \mathbb{Z}.$$

Then we derive the point spectrum and the continuous spectrum,

$$\sigma_p(K) = \left\{ \frac{2}{\pi} \cdot \frac{1}{4p+1} \mid p \in \mathbb{Z} \right\} \quad \text{and} \quad \sigma_c(K) = \{0\}.$$

The eigenfunction corresponding to

$$\lambda_p = \frac{2}{\pi} \cdot \frac{1}{4p+1}, \quad p \in \mathbb{Z},$$

is

$$f_p(x) = \sin\left(\left(\frac{\pi}{2} + 2p\pi\right)x\right), \quad x \in [0, 1]; \quad p \in \mathbb{Z}.$$

6) The numerically largest eigenvalue is $\lambda_0 = \frac{2}{\pi} > 0$, hence

$$\|K\| = \max\{|\lambda_p| \mid p \in \mathbb{Z}\} = \frac{2}{\pi}.$$

CHECK. As a *check* we use that we should have

$$\frac{1}{2} = \|k\|_2^2 = \sum_{p \in \mathbb{Z}} |\lambda_p|^2.$$

We get

$$\sum_{p \in \mathbb{Z}} |\lambda_p|^2 = \frac{4}{\pi^2} \sum_{p=-\infty}^{+\infty} \frac{1}{(4p+1)^2} = \frac{4}{\pi^2} \sum_{p=0}^{+\infty} \frac{1}{(2p+1)^2} = \frac{4}{\pi^2} \cdot \frac{\pi^2}{8} = \frac{1}{2} = \|k\|_2^2,$$

because it follows from

$$\begin{aligned} \frac{\pi^2}{6} &= \sum_{n=1}^{+\infty} \frac{1}{n^2} = \left\{ 1 + \frac{1}{2^2} + \frac{1}{2^4} + \dots \right\} \sum_{p=0}^{+\infty} \frac{1}{(2p+1)^2} = \sum_{n=0}^{+\infty} \frac{1}{4^n} \sum_{p=0}^{+\infty} \frac{1}{(2p+1)^2} \\ &= \frac{4}{3} \sum_{p=0}^{+\infty} \frac{1}{(2p+1)^2}, \end{aligned}$$

that

$$\sum_{p=0}^{+\infty} \frac{1}{(2p+1)^2} = \frac{\pi^2}{8}.$$

Index

- canonical kernel of finite rank, 27
- Cauchy-Schwarz inequality, 10, 16, 42, 47, 61
- differentiability in weak sense, 63
- fractional integration, 51
- general Hilbert-Schmidt operator, 5, 7, 27
- Hölder inequality, 49
- Hermitian kernel, 33, 37, 42
- Hilbert Schmidt norm, 7
- Hilbert-Schmidt operator, 5, 33
- iterated kernels, 13
- Legendre polynomial, 33
- Neumann series, 49
- Parseval's equation, 7
- trace, 15, 17, 27
- Volterra integral operator, 47

This e-book
is made with
SetaPDF



SETASIGN



PDF components for **PHP** developers

www.setasign.com

